

# PINE MARTENS BOUNCE BACK

## Two Moors Project



**Emily Bacon**  
Citizen Science  
Officer



1

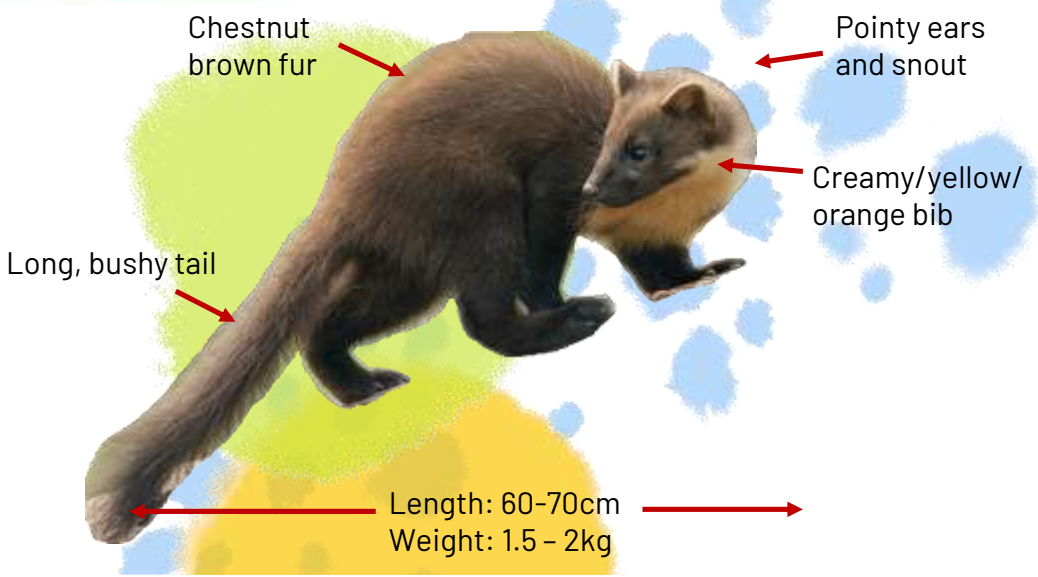
## The Pine Marten (*Martes Martes*)

- Part of the Mustelidae Family
- 6 native UK species and 1 invasive
- Each adapted to different habitats
- Example of adaptive radiation (water, underground and woodland specialists)



2

# The Pine Marten (Martes Martes)



3

# The Pine Marten (Martes Martes)



Polecat/Ferrets

Vs



Pine marten

4

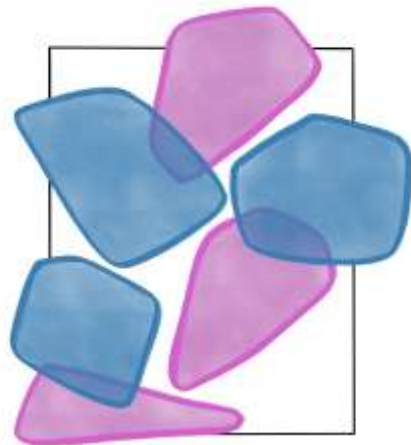


5

## Ecology & biology

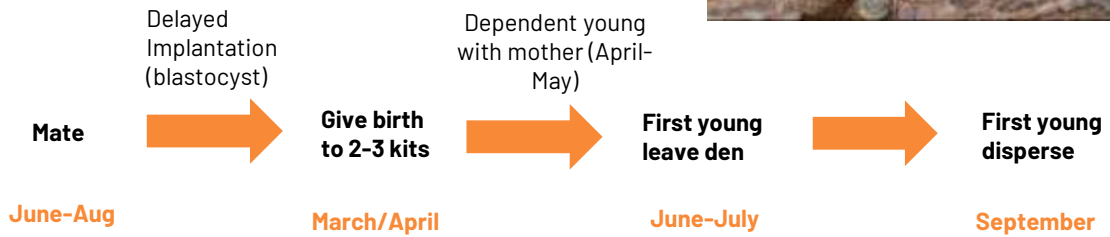
---

- Solitary, territorial & live at low densities
  - Highly mobile with large territories (1-10km<sup>2</sup> average, largest recorded 53km<sup>2</sup>)
  - Low territory overlap between animals
- Biggest risks: road traffic, traps, poisons
- Natural predators: foxes, birds of prey
- Slow breeders



6

- 1 litter per year (average 2-3 kits)
- Life expectancy 8-10 years
- Won't start breeding until 2-3 years old
- Delayed implantation



MacPherson & Wright 2021

7

19 June 2025 - first sighting of Bonnie and two kits (kits probably 3 months old)



8

## What does a pine marten need?

- Safe shelter: aerial denning
- Habitat mosaic for varied food sources



© shutterstock

10

## Aerial denning



11

## Pine Marten Diet

- Opportunistic Omnivores - abundant and easy.
- Small mammals (esp. field voles) consistently make-up 40-50% of diet.
- Will also eat fruit, carrion, reptiles, birds, insects in varying amounts.
- Adaptable to what is abundant



Small mammals: 40-50%



Fruit: 19-33%



Birds: 14-22%



Medium-size mammals: 7-12%



Invertebrates: 10-41%

12



13

29.29 inHg - 15C 06/12/2025 08:12PM CAMERA1



© Barnowl Trust

14



Ben Porter

15

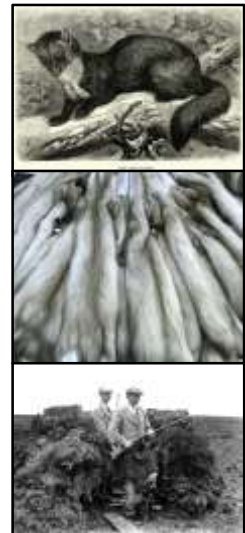
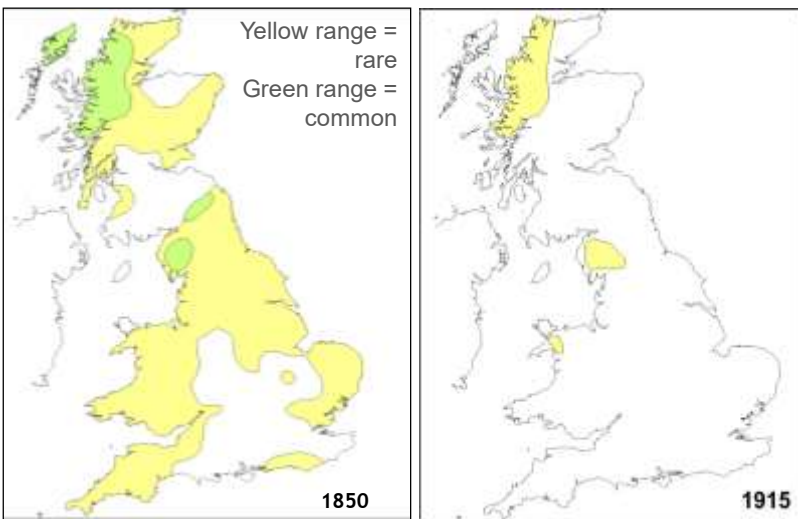


Ben Porter

16

# Pine marten history in Britain

Adapted from Langley & Yalden (1977)



17

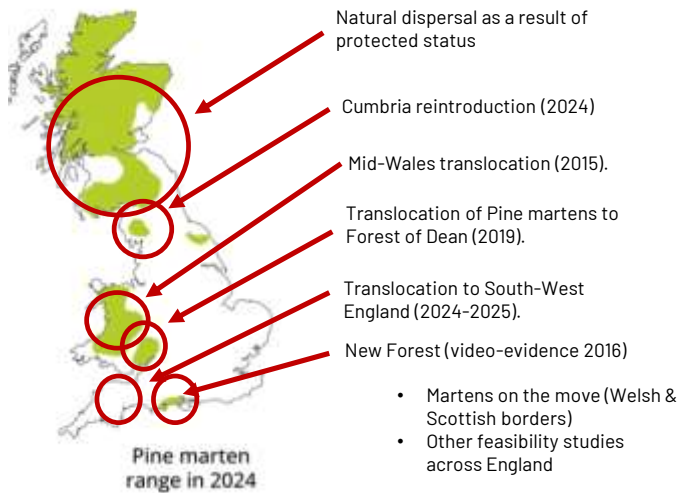
# Historical records (1700s onward)



18

## Pine Marten recovery

**Red Listed: Critically Endangered (CR) in England & Wales**



Long-term strategic recovery plan for pine martens in Britain

Jeremy MacPherson and Patrick Wright  
June 2021



Vincent Wildlife Trust 2024

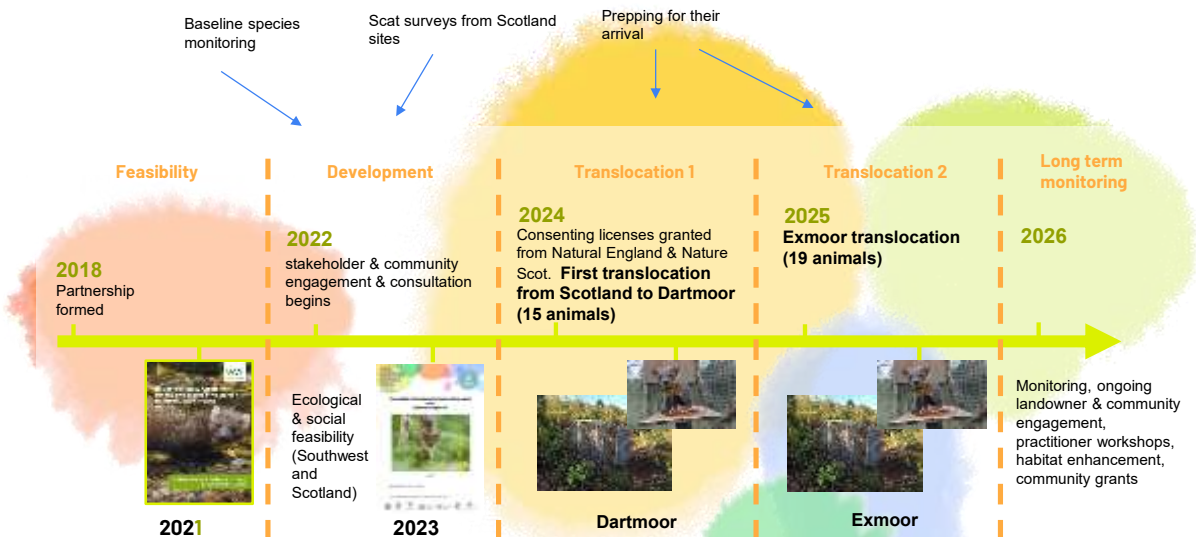
19

# Restoring a lost species



20

## Timeline



<https://www.devonwildlifetrust.org/our-reports-and-documents>

21



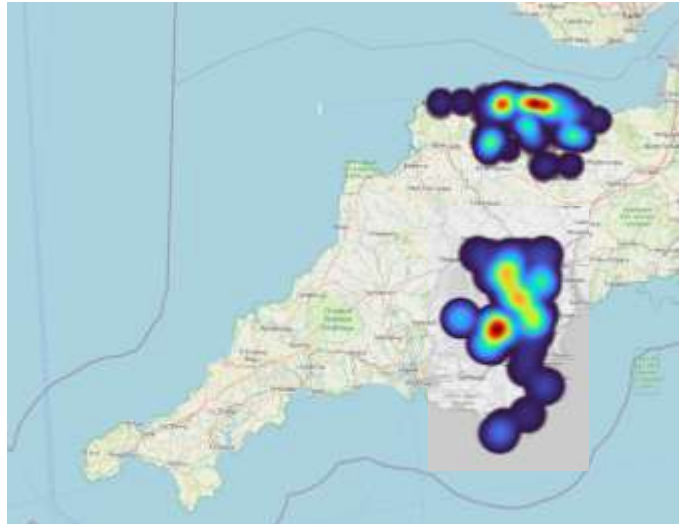
22



23

## Translocated pine marten movements

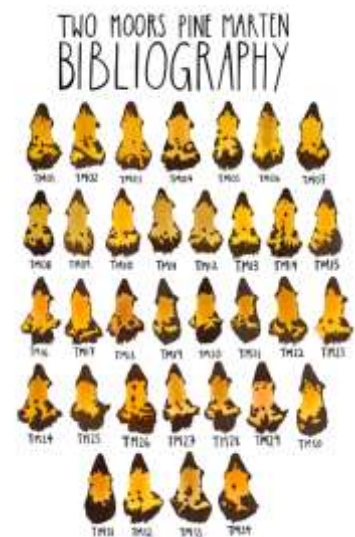
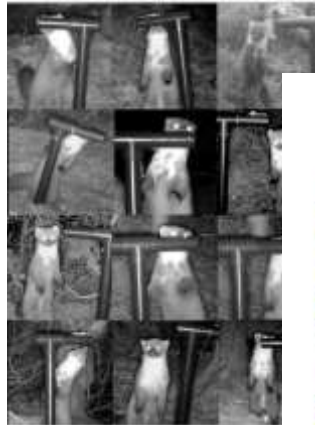
- 19 pine martens translocated to Exmoor (2025), 15 to Dartmoor (2024)
- Average dispersal: 12.88km (Exmoor)(0-30km), 14km (Dartmoor) (0-45km)
- Average territory size (Exmoor GPS animals only): 5.6km<sup>2</sup>(1-12km<sup>2</sup>)



24

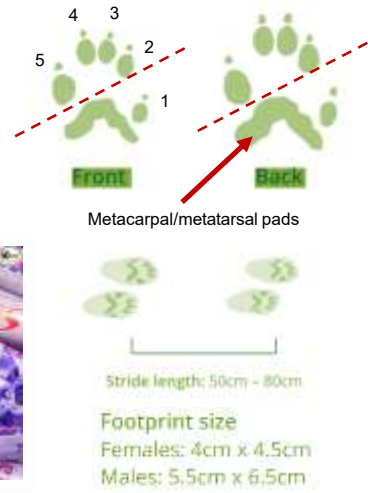
## Long-term monitoring

- Camera traps on known territories
- Partners monitoring own land
- Citizen Science Woodland Surveys



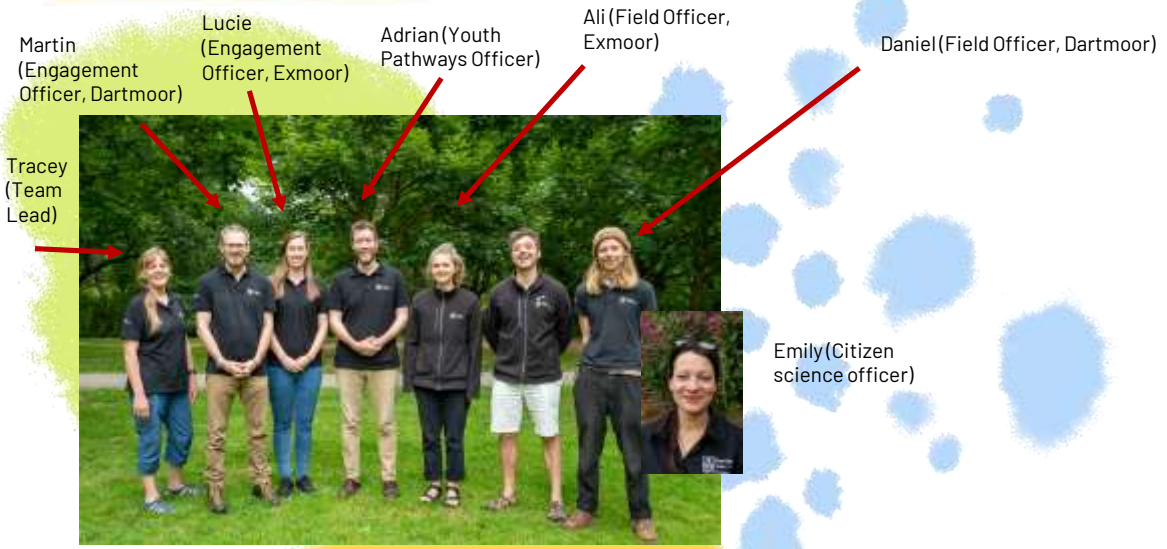
25

## Long-term monitoring: other signs



26

## Two Moors Project Team



27



28

## Facilitating habitat enhancement

- installation of den boxes, tree planting, hedge restoration – opportunities for landowners
- **Community grants** – £3000 per year, individual projects £500-£1000 to support habitat enhancement, management & restoration for pine marten
- Site visits, workshops
- Next Winter: free tree packs

<https://www.devonwildlifetrust.org/pine-marten-community-grants>



29

## Get involved

---

- Landowners: host a den box, site visits, tree packs
- Apply for a community grant
- Citizen science - install a camera or help ID images online with a cuppa on the sofa!
- Join a community event
- Stay up to date with our "Pine marten Diaries" e-newsletter
- Report a sighting  
[pinemartens@devonwildlifetrust.org](mailto:pinemartens@devonwildlifetrust.org)

<https://twomoorspinemartens.org/>

