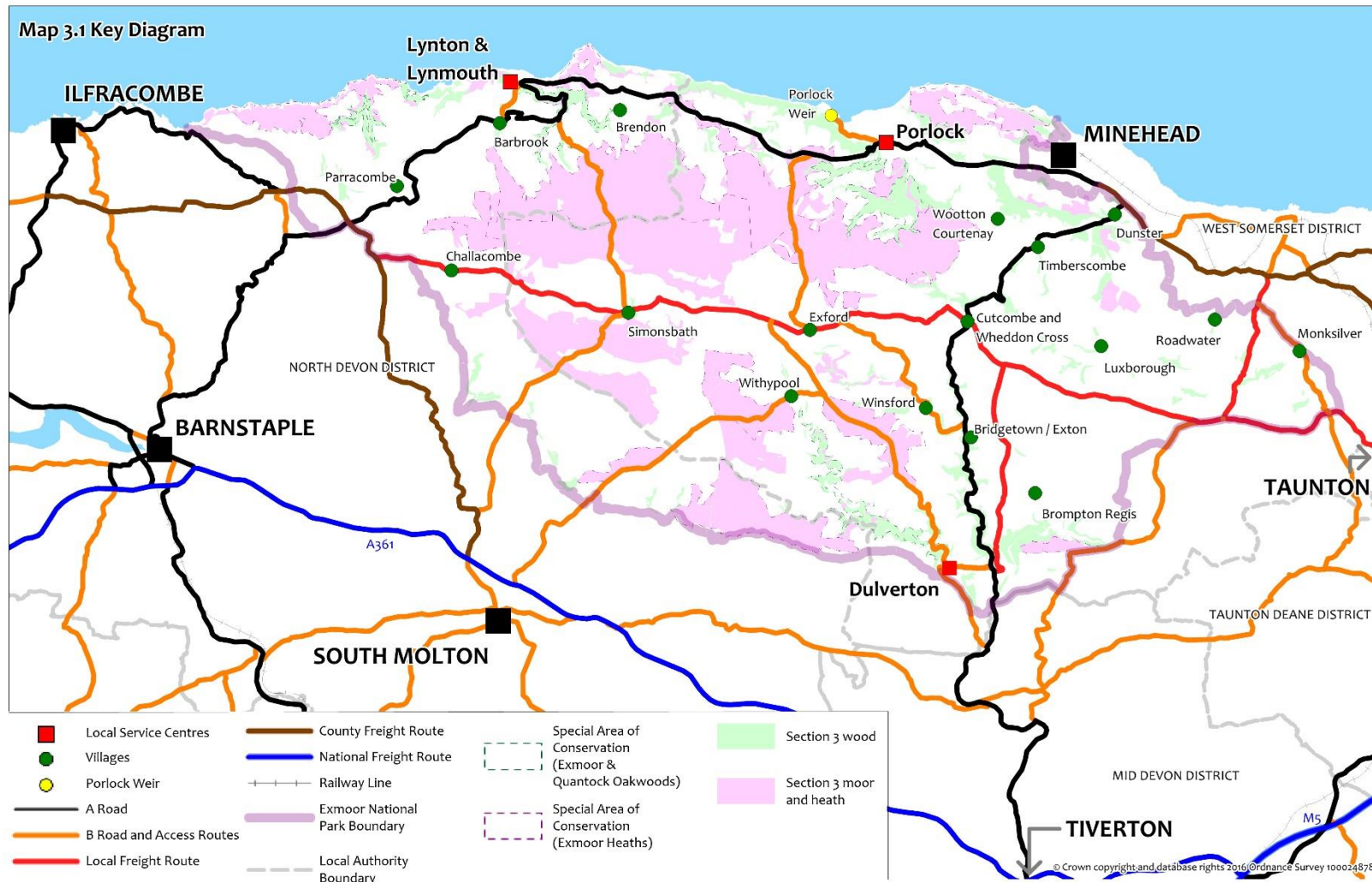


Schedule of Proposed Changes - Appendices

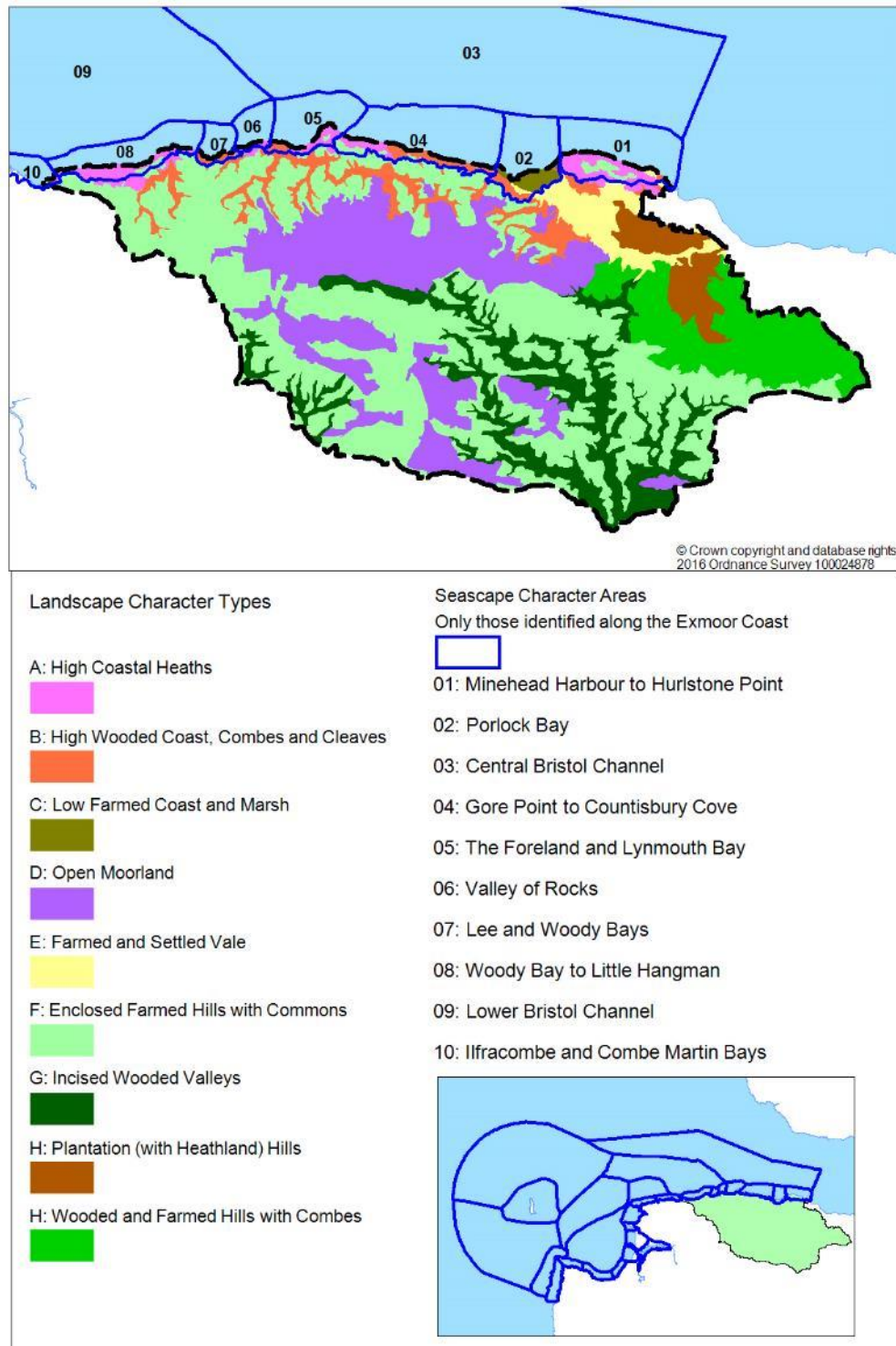
Appendix 1: Key Diagram

2.1 Proposed amendments to Map 3.1 Key Diagram.



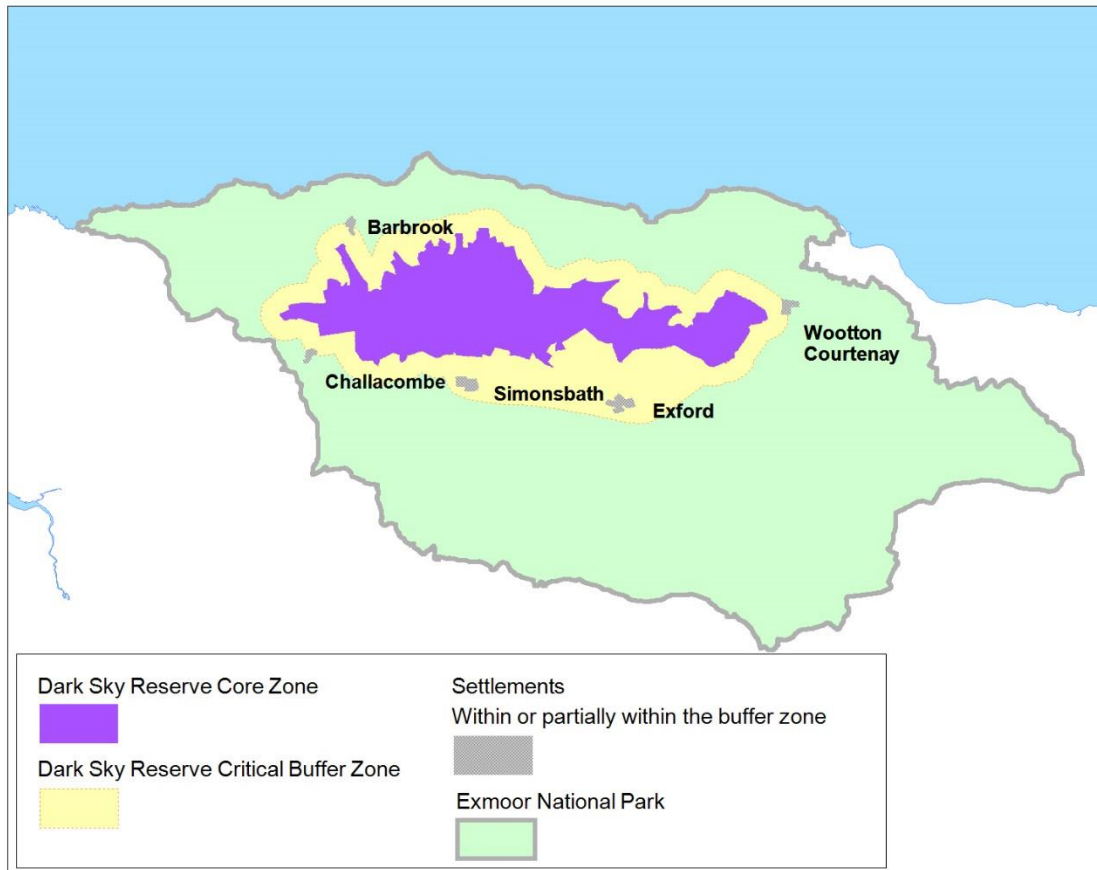
Appendix 2: Exmoor Character Types and Seascape Character Areas Map

2.2 Proposed amendments to Map 4.1 Exmoor Landscape Character Types and Seascape Character Areas.



Appendix 3: Dark Sky Reserve Core Zone and Critical Buffer Zone Map

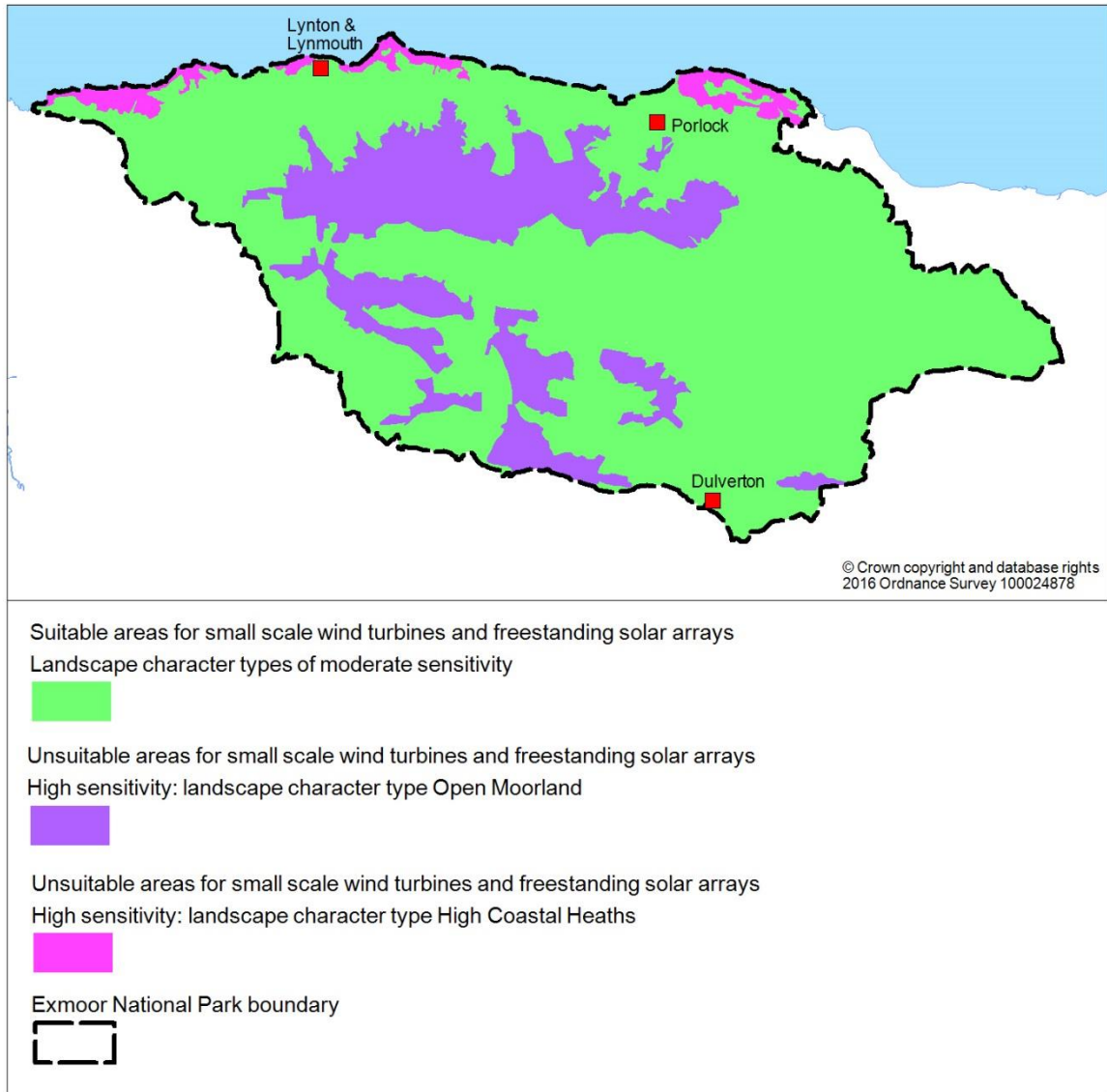
2.3 Proposed amendments to Map 4.2 Dark Sky Reserve Core Zone and Critical Buffer Zone.



© Crown copyright and database rights
2016 Ordnance Survey 100024878

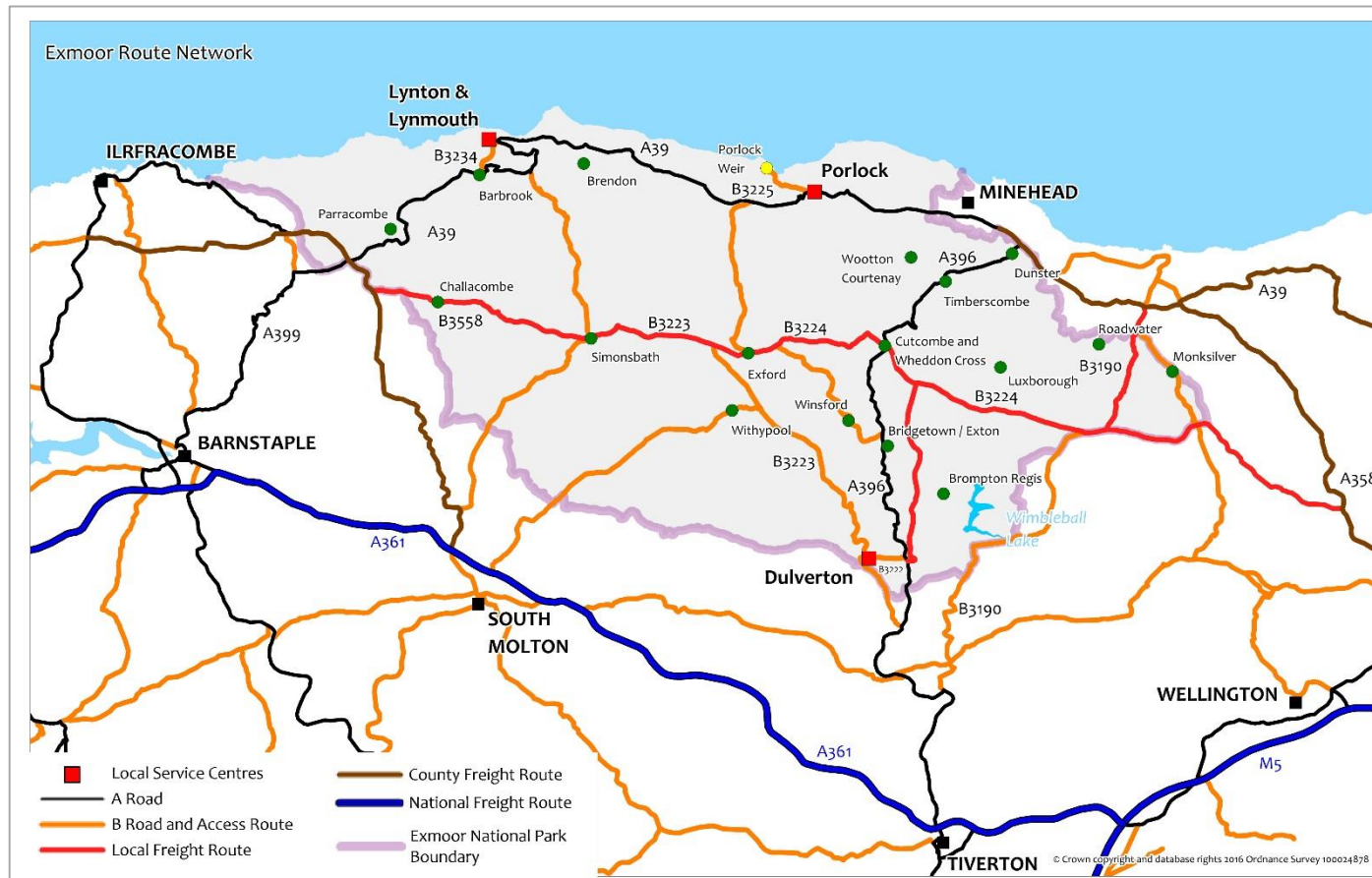
Appendix 4: Suitable Areas for Small Scale Wind Turbines and Freestanding Solar Arrays

2.4 Proposed amendment to include Map 5.2 Suitable Areas for Small Scale Wind Turbines and Freestanding Solar Arrays



Appendix 5: Exmoor Route Network

2.5 Proposed amendments to Map 9.1 Exmoor Route Network



Appendix 6: Proposed Changes to the Policies Maps

Inset Map 1 Barbrook

Inset Map 5 Challacombe (A3)

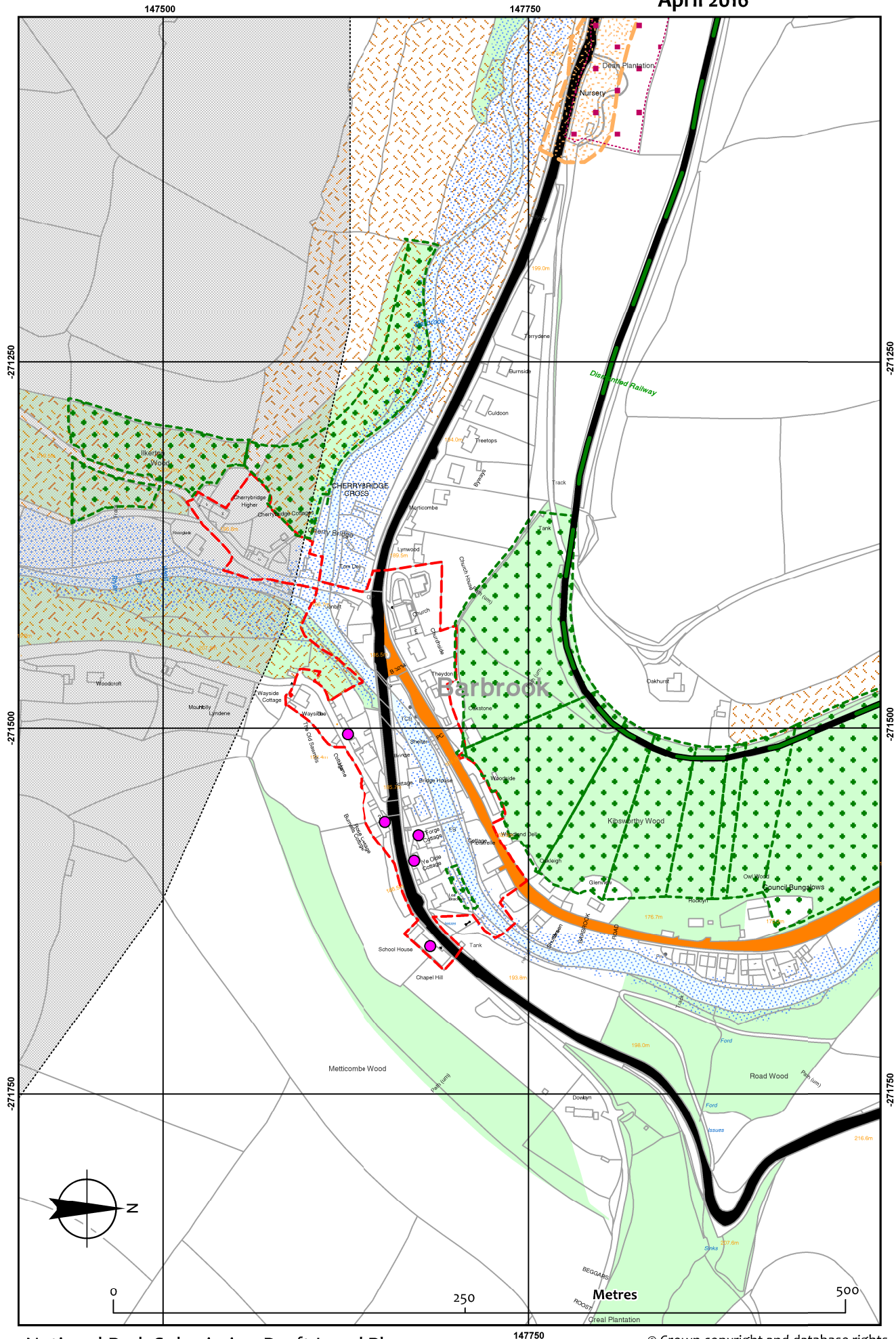
Inset Map 6 Cutcombe and Wheddon Cross (A3)

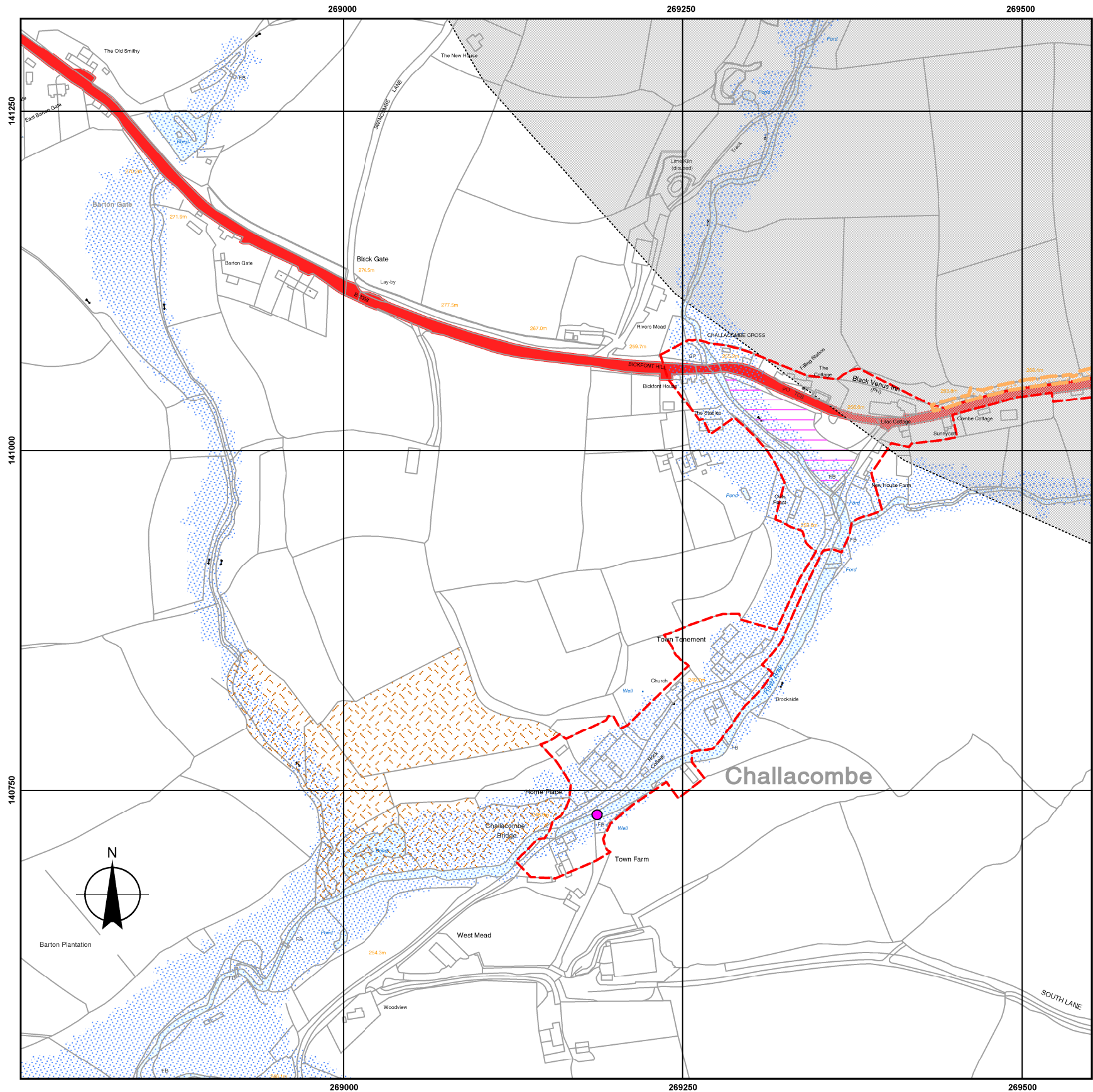
Inset Map 9 Exford (A3)

Inset Map 17 Simonsbath (A3)

Inset Map 21 Wootton Courtenay (A3)

Maps 22 and 23 East and West of Exmoor National Park (A2)

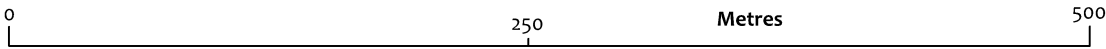


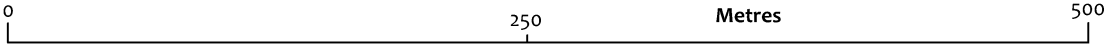
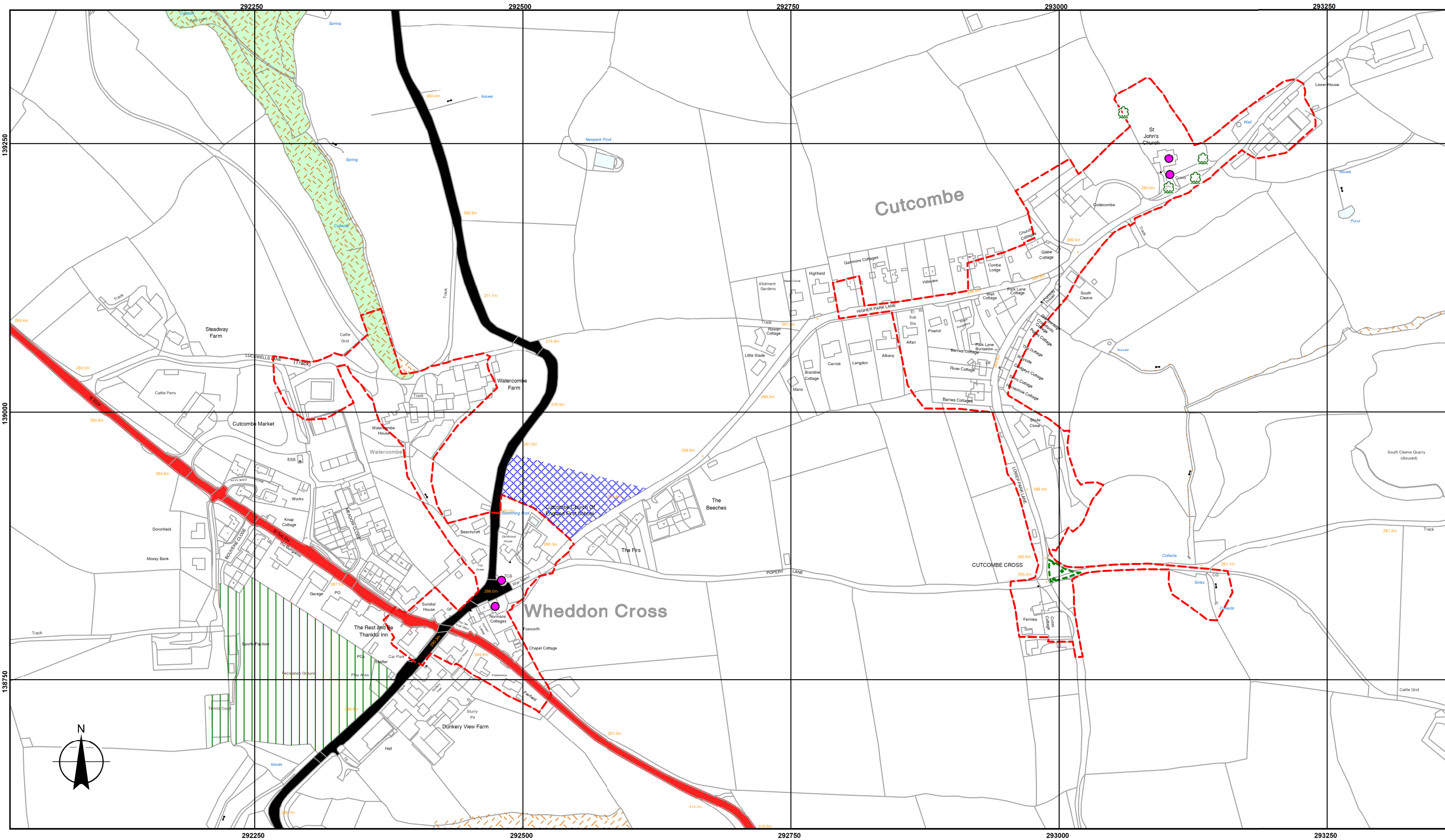


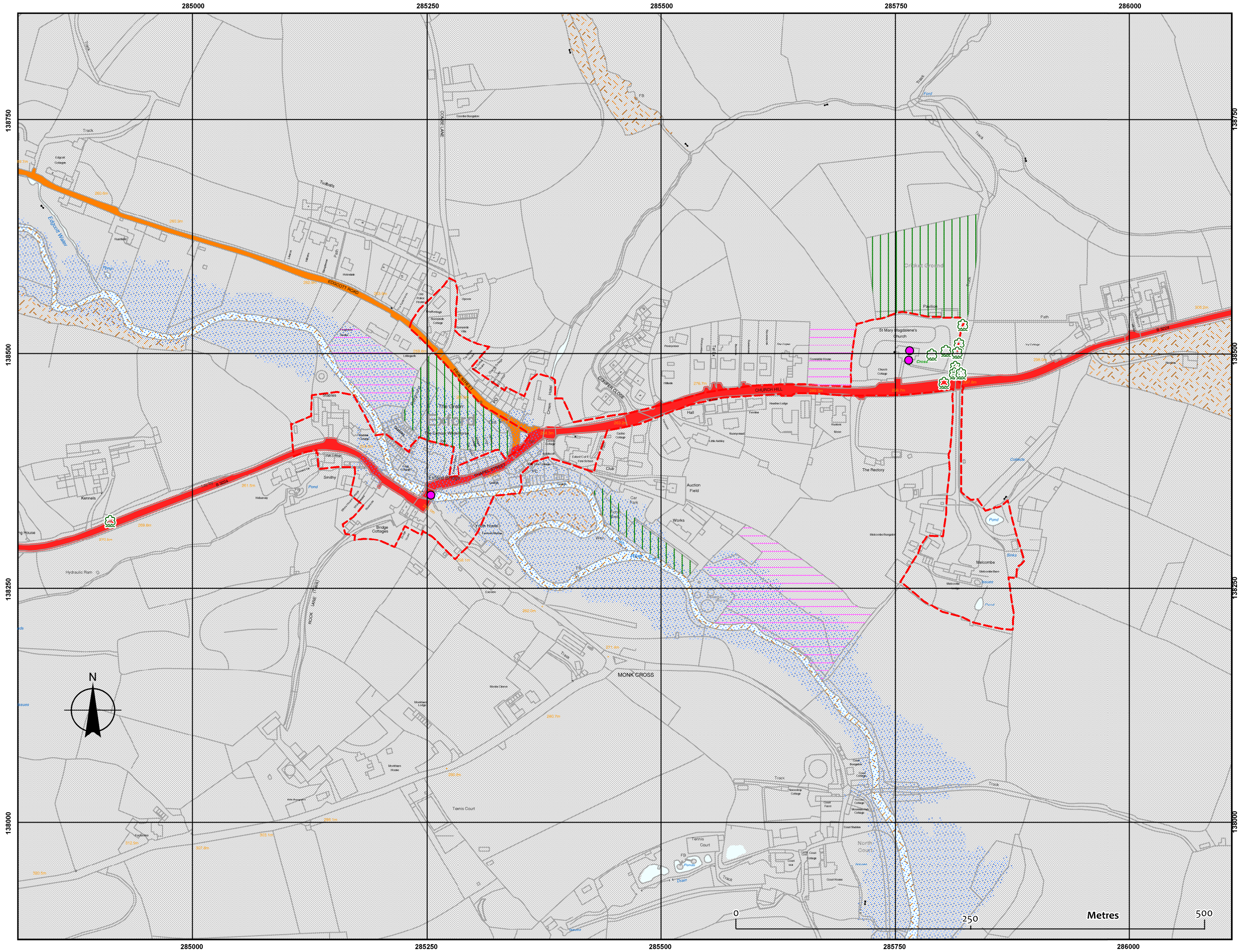
Exmoor National Park Submission Draft Local Plan
(including minerals and waste policies) 2011 - 2031

Settlement is partially within Dark Sky Reserve Critical Buffer Zone

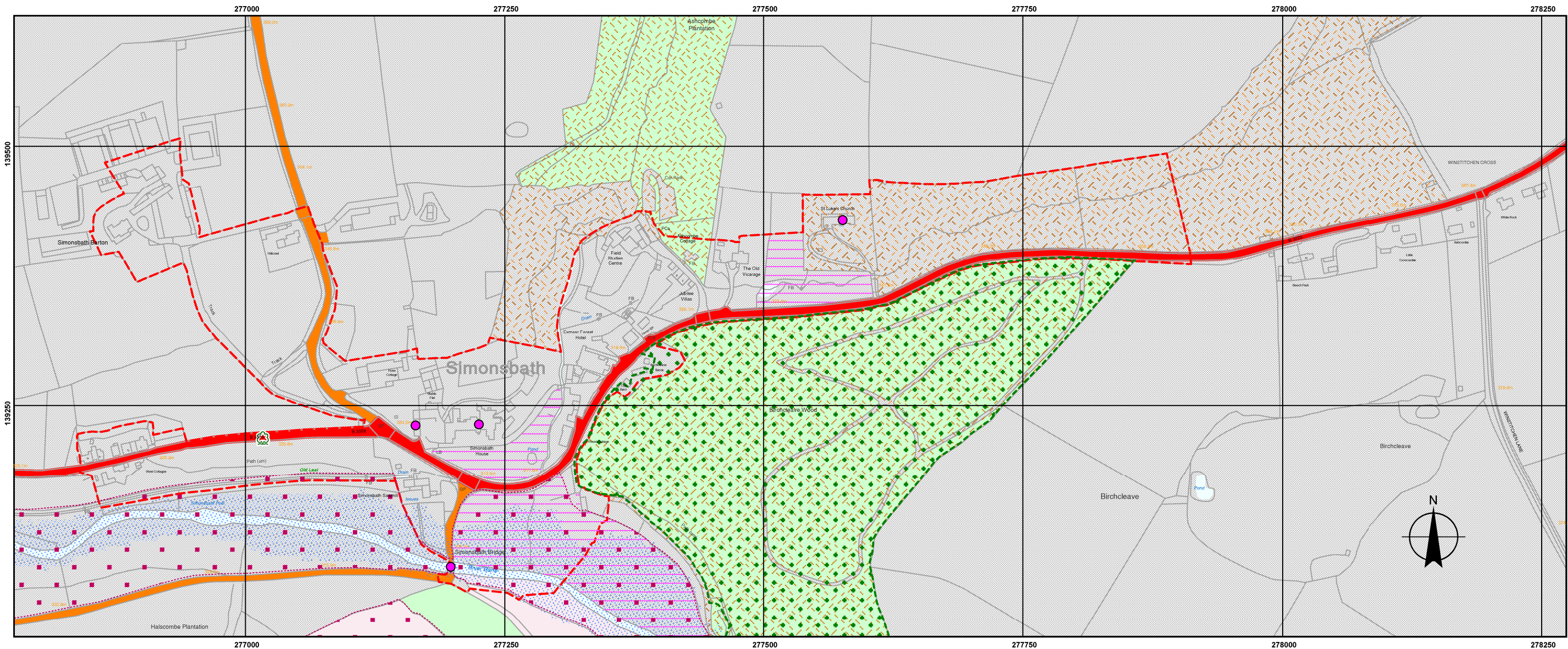
© Crown copyright and database rights
2016 Ordnance Survey 100024878



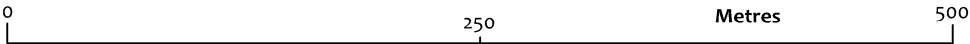




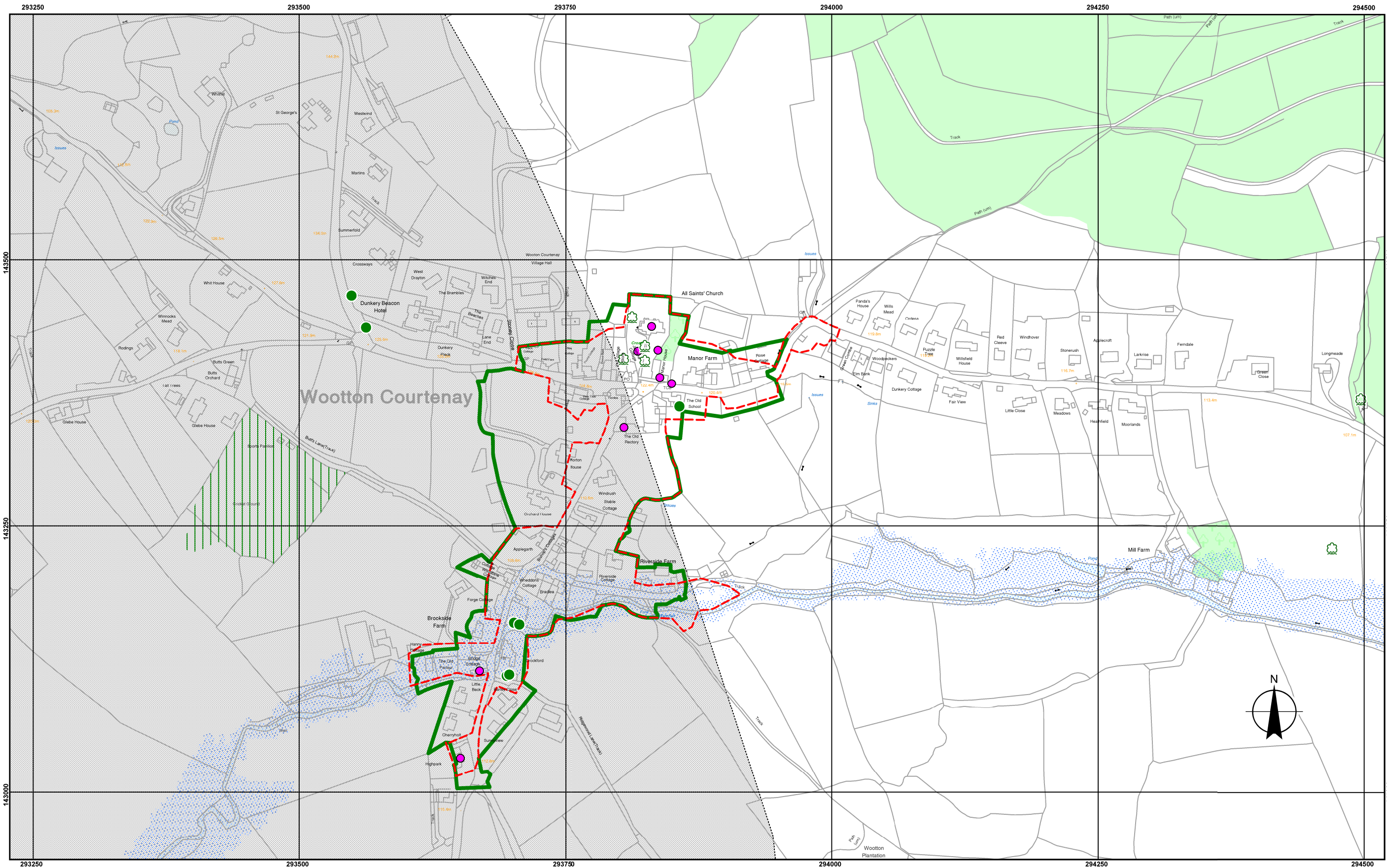
Exmoor National Park Submission Draft Local Plan
(including minerals and waste policies) 2011 - 2031
Settlement is completely within Dark Sky Reserve Critical Buffer Zone



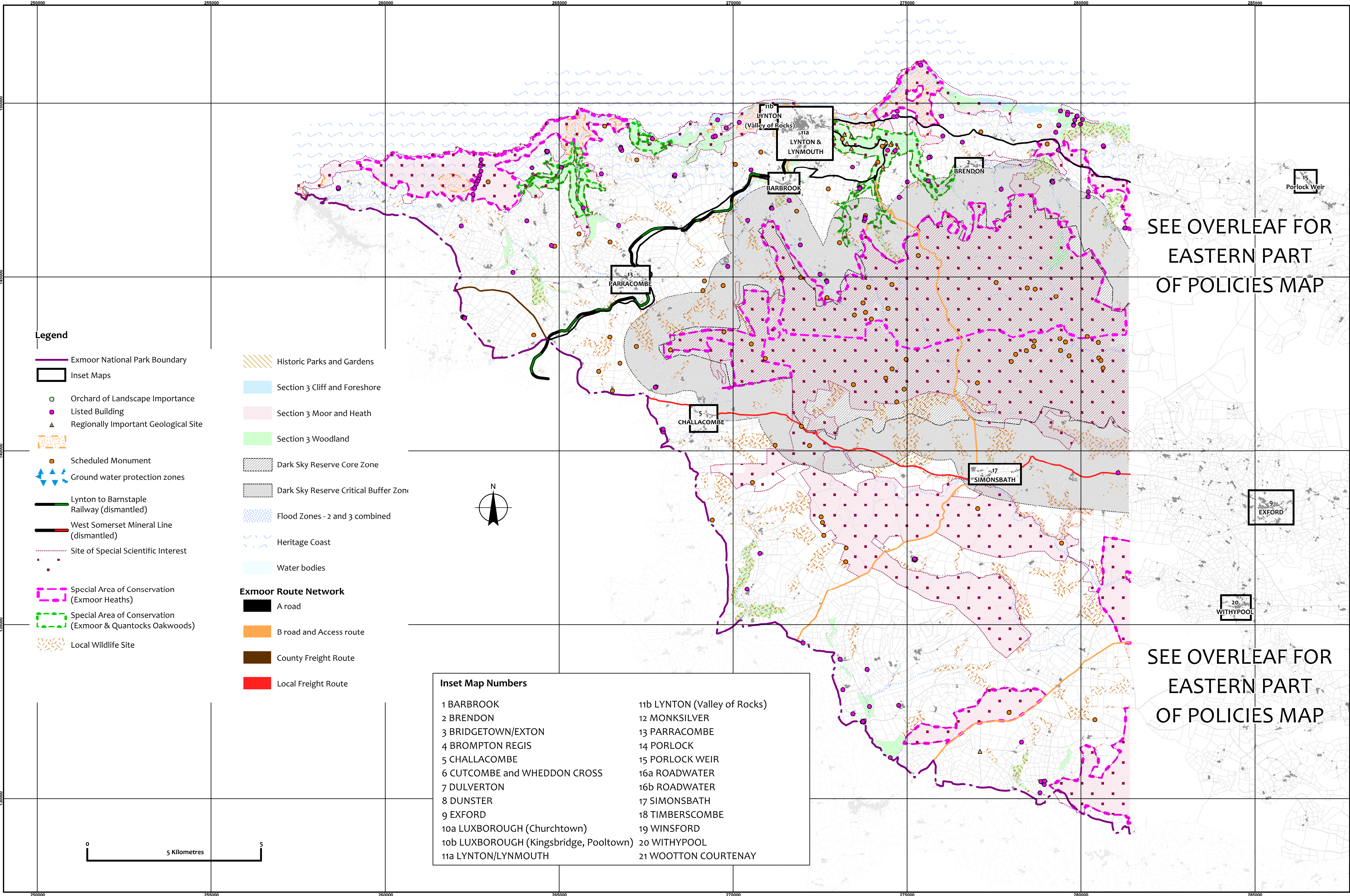
Exmoor National Park Submission Draft Local Plan
(including minerals and waste policies) 2011 - 2031
Settlement is completely within Dark Sky Reserve Critical Buffer Zone



© Crown copyright and database rights
2016 Ordnance Survey 100024878



Map 22 - WEST OF EXMOOR NATIONAL PARK



Map 23 - EAST OF EXMOOR NATIONAL PARK

