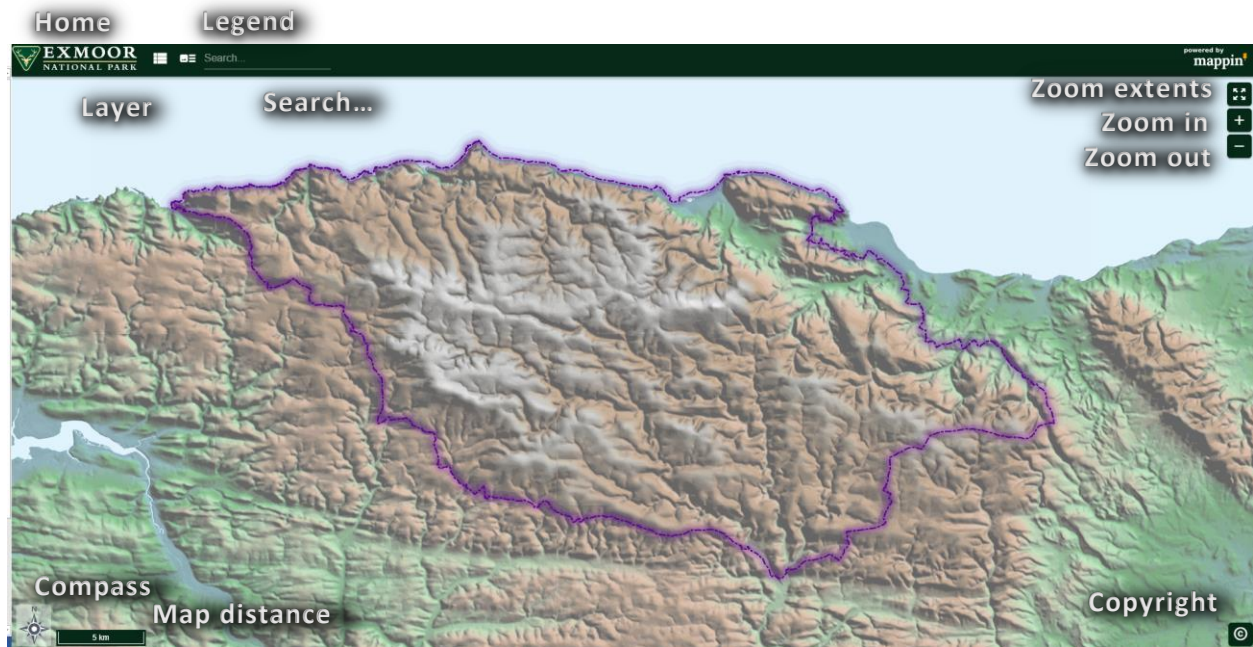




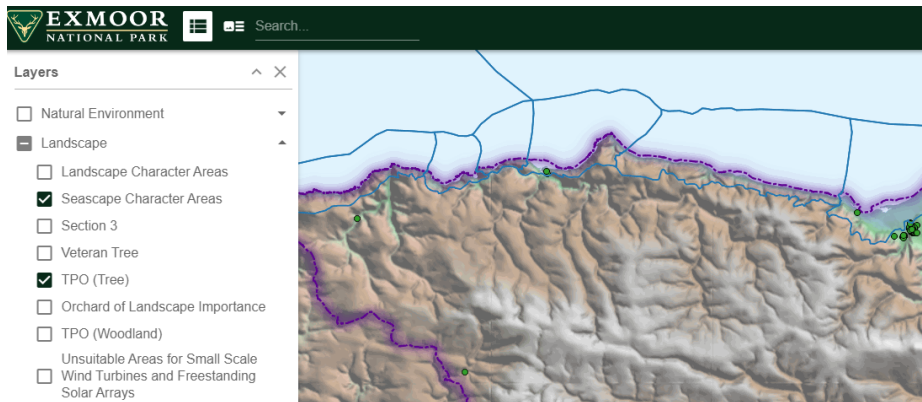
Web Mapping - Exmoor National Park Authority


Web map with various icons around the screen.



 **Home** – takes the user back to the home screen <http://www.exmoor-nationalpark.gov.uk/>

 **Layers** – Shows the layers that are available for view: for example *Seascape CharacterAreas* and *Tree Preservation Order (tree)*.



 **Legend** – legend of all the layers visible

Search... - Searches addresses, and local places for example: *Ash Lane, 1 Church Hill*

Zoom extents – Zoom extents of mapping, basically resets map

Zoom out – Zooms map out

Zoom in – Zooms map in

Compass – North, South, East and West, gives user orientation

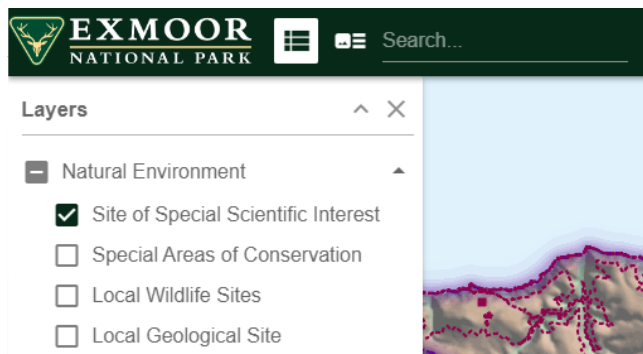
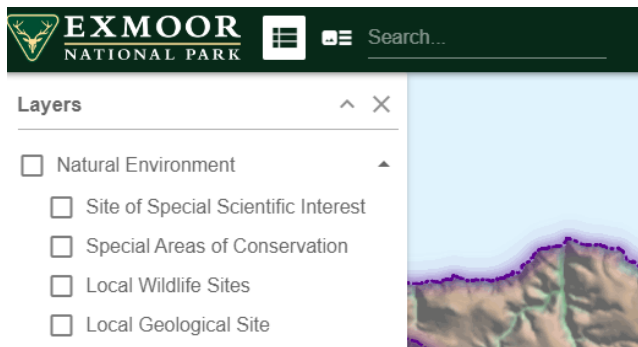
Map distance – Gives user a sense of distance

Copyright – Copyright for any given data layer, for example: **Ordnance Survey** and **Aerial Photography**

Getting information from the webmap

If a user wishes to get information about any particular layer this is possible by a couple of clicks of the mouse.

- 1) First find which map has the layer they want to find information for.
- 2) So for this instance we will want to get a name of some Site of Scientific Interest and look at what policy it refers to on our local plan. The webmap we would want to use would be used for the Local Plan. <http://localplan.exmoor-nationalpark.gov.uk/>



- 3) Next Step is to click the map, then click Link to Policy.



We have found it is linked to **CE-S3 BIODIVERSITY AND GREEN INFRASTRUCTURE**.