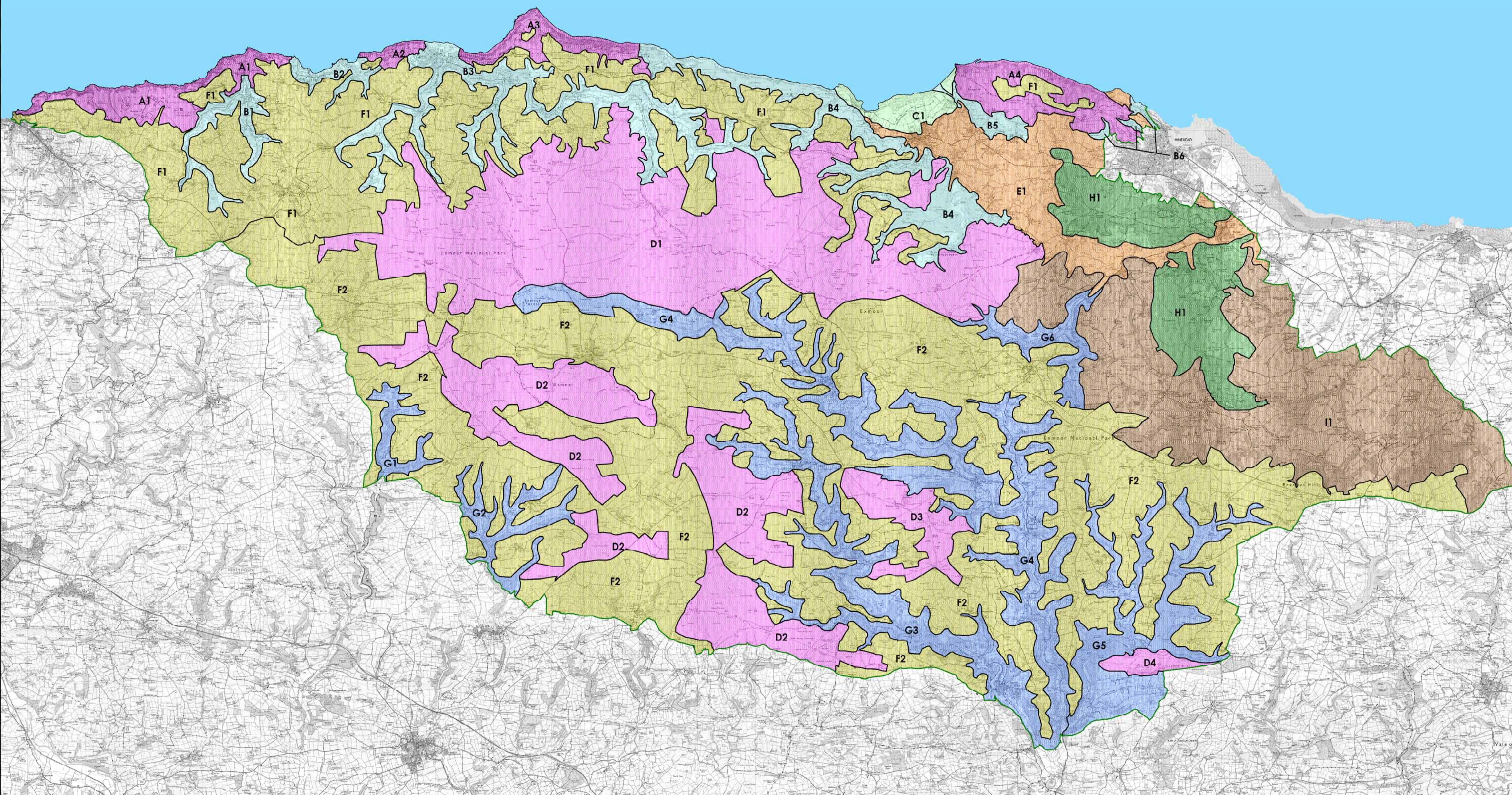


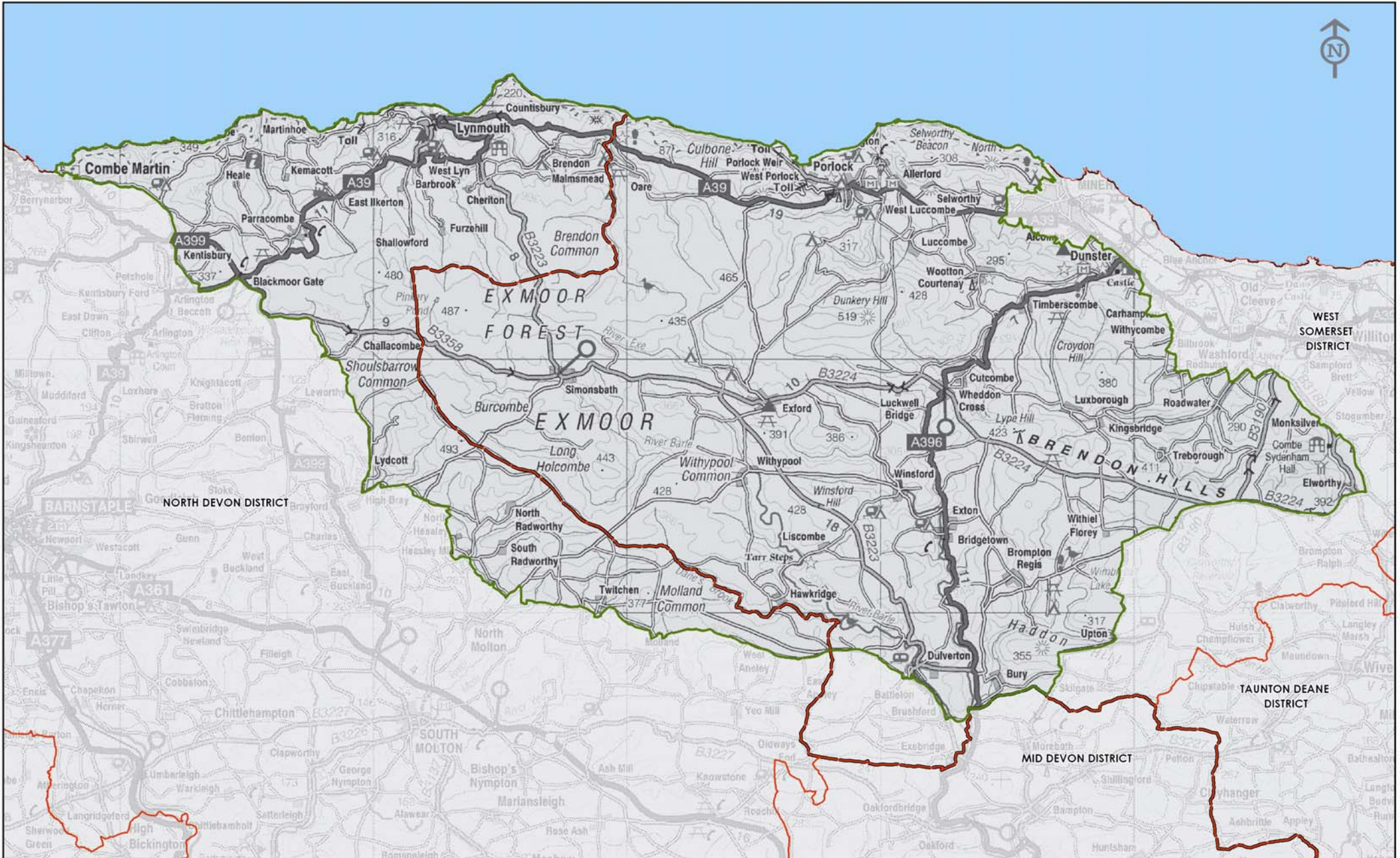
Figure 4: Exmoor National Park Landscape Character Types and Areas



Landscape Types and Character Areas					
	Enclosed Farmed Hills with Commons		A: High Coastal Heaths		C: Low Farmed Coast and Marsh
	Farmed and Settled Vale		A1: Holdstone Down and Trentishoe		C1: Porlock
	High Coastal Heaths		A2: Valley of Rocks		D: Open Moorland
	High Wooded Coasts, Combes and Cleave		A3: The Foreland		D1: Northern
	Incised Wooded Valleys		A4: North Hill		D2: Southern
	Low Farmed Coast and Marsh		B: High Wooded Coast, Combes and Cleave		D3: Winsford Hill
	Open Moorland		B1: Heddon's Mouth		D4: Haddon Hill
	Plantations (with Heathland) Hills		B2: Woody Bay		E: Farmed and Settled Vale
	Wooded and Farmed Hills with Combes		B3: Lyn		E1: Porlock - Dunster - Minehead
			B4: Culbone - Horner		G: Incised Wooded Valleys
			B5: Bossington		G1: Bray
			B6: Culver Cliff		G2: Mole
					G3: Barle
					G4: Exe
					G5: Haddeo
					G6: Avill
					H: Plantation (with heathland) Hills
					H1: Croydon and Grabbist
					I: Wooded and Farmed Hills with Combes
					I1: The Brendons

EXMOOR NATIONAL PARK
 Details:
 Exmoor National Park Landscape Character Types and Areas
 Compiled by: Muff Sully
 Scale: 1:65,000
 Date: July 2007
 This document includes mapping data licensed from Ordnance Survey with the permission of the controller of Her Majesty's Stationery Office. © Crown Copyright 2007. All rights reserved. Licence number: 100024918.
 Digital Mapping Services from:
 Dotted Lines © Crown Copyright 2007. All rights reserved. Licence number: 100024918.

Figure 1: Exmoor National Park Location Map




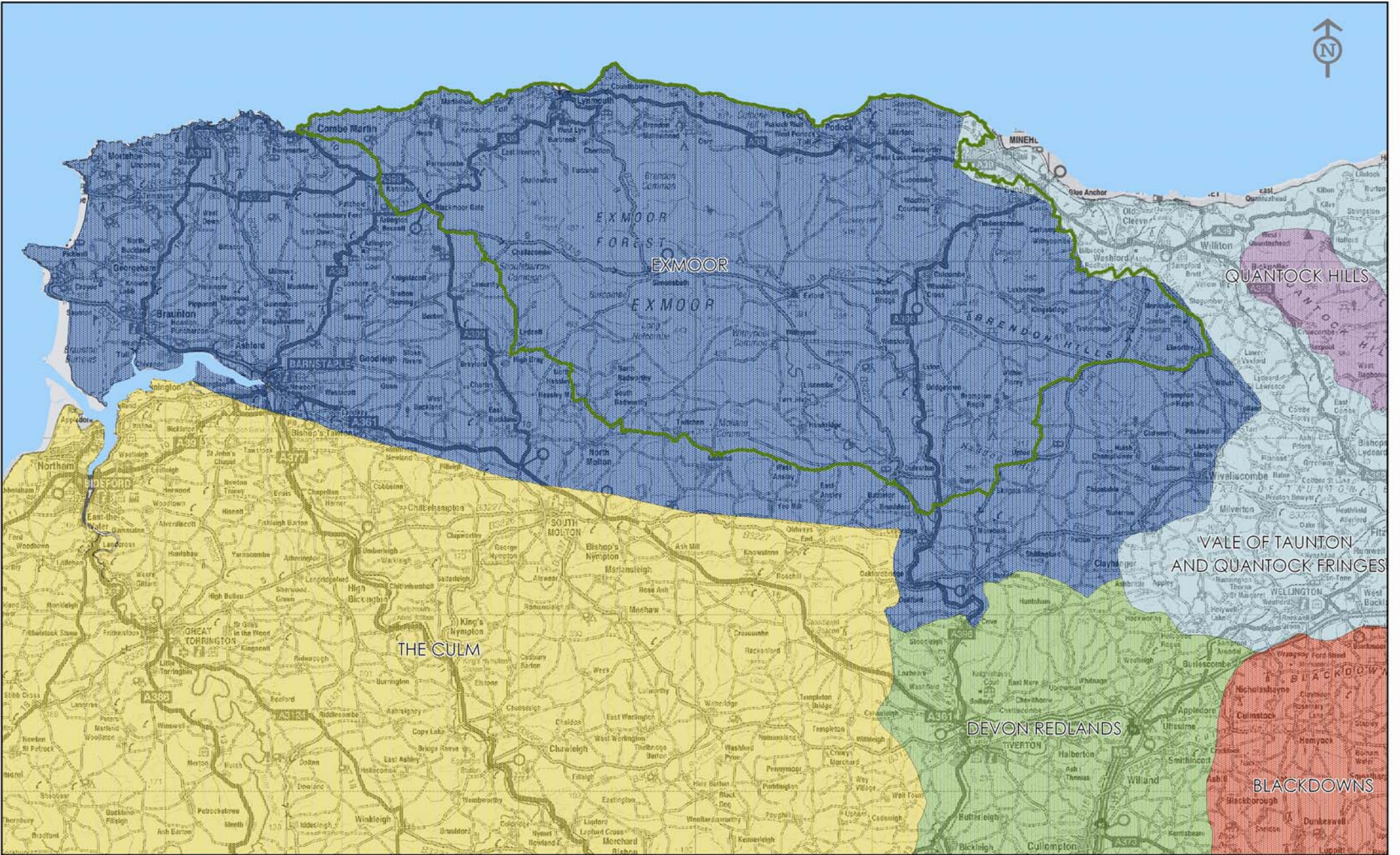
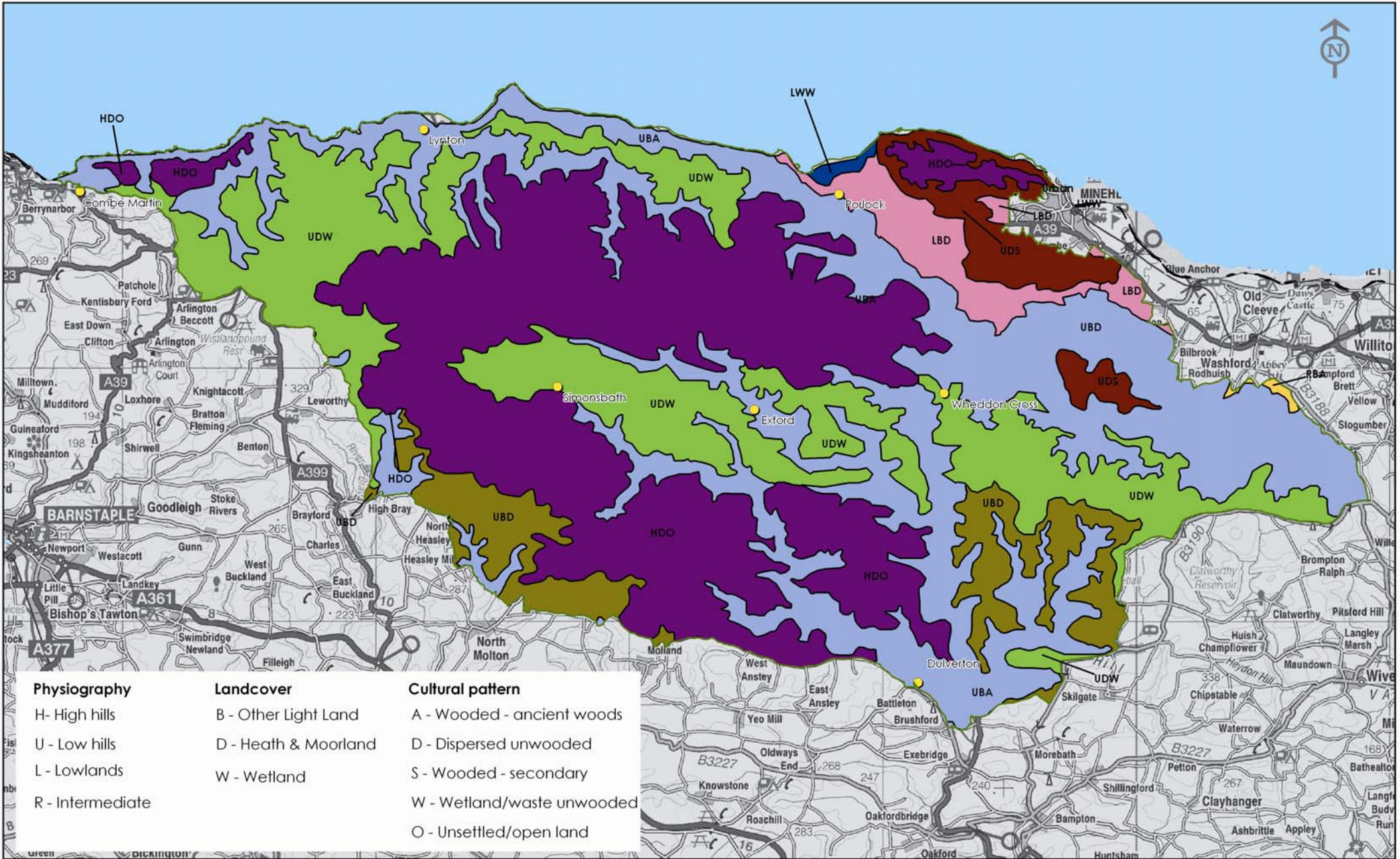
	Details Exmoor National Park Location Map		<small>The product includes mapping data licensed from Ordnance Survey with the permission of the Controller of Her Majesty's Stationery Office. © Crown copyright 2005. All rights reserved. Licence no. 500004573</small>	
	Compiled by Matt Sully	Scale 1:140000	Date July 2007	Compiled and Printed by: Exmoor National Park Authority Exmoor House, Dulverton, TA22 1HL Tel: 01398 323645 E-mail: info@exmoor-nationalpark.gov.uk Web: www.exmoor-nationalpark.gov.uk

Figure 2: National Context: Joint Character Areas



	Details National Context: Joint Character Areas		<small>The product includes mapping data licensed from Ordnance Survey with the permission of the Controller of Her Majesty's Stationery Office. © Crown copyright 2005. All rights reserved. Licence No. 100024878.</small>	
	Compiled by Matt Sully	Scale 1:200000	Date July 2007	Compiled and Printed by: Exmoor National Park Authority Exmoor House, Dulverton, TA22 9HL Tel: 01398 323445 E-mail: info@exmoor-nationalpark.gov.uk Web: www.exmoor-nationalpark.gov.uk
■ BLACKDOWNS ■ EXMOOR ■ THE CULM ■ DEVON REDLANDS ■ QUANTOCK HILLS ■ VALE OF TAUNTON AND QUANTOCK FRINGS			□ Exmoor National Park Boundary (690.2 Sq km)	

Figure 3: National Context: National Landscape Typology



	Details National Context: National Landscape Typology			The product includes mapping data licensed from Ordnance Survey with the permission of the Controller of Her Majesty's Stationary Office. © Crown copyright 2005. All rights reserved. Licence no. 100024572. Landscape Character Types (LCT) (1:250,000 scale) developed for the Countryside Agency by Steven Wallace in conjunction with the Living Landscape Project and Eric Day. Copyright: Countryside Agency and Cardiff University, still copyright 2001.
	Compiled by Matt Sully	Scale 1:140000	Date July 2007	
Compiled and Printed by: Exmoor National Park Authority Exmoor House, Dulverton, TA22 1HL Tel: 01398 323645 E-mail: info@exmoor-nationalpark.gov.uk Web: www.exmoor-nationalpark.gov.uk			Exmoor National Park Boundary (690.2 Sq km)	

Figure 4: Exmoor National Park Landscape Character Types and Areas

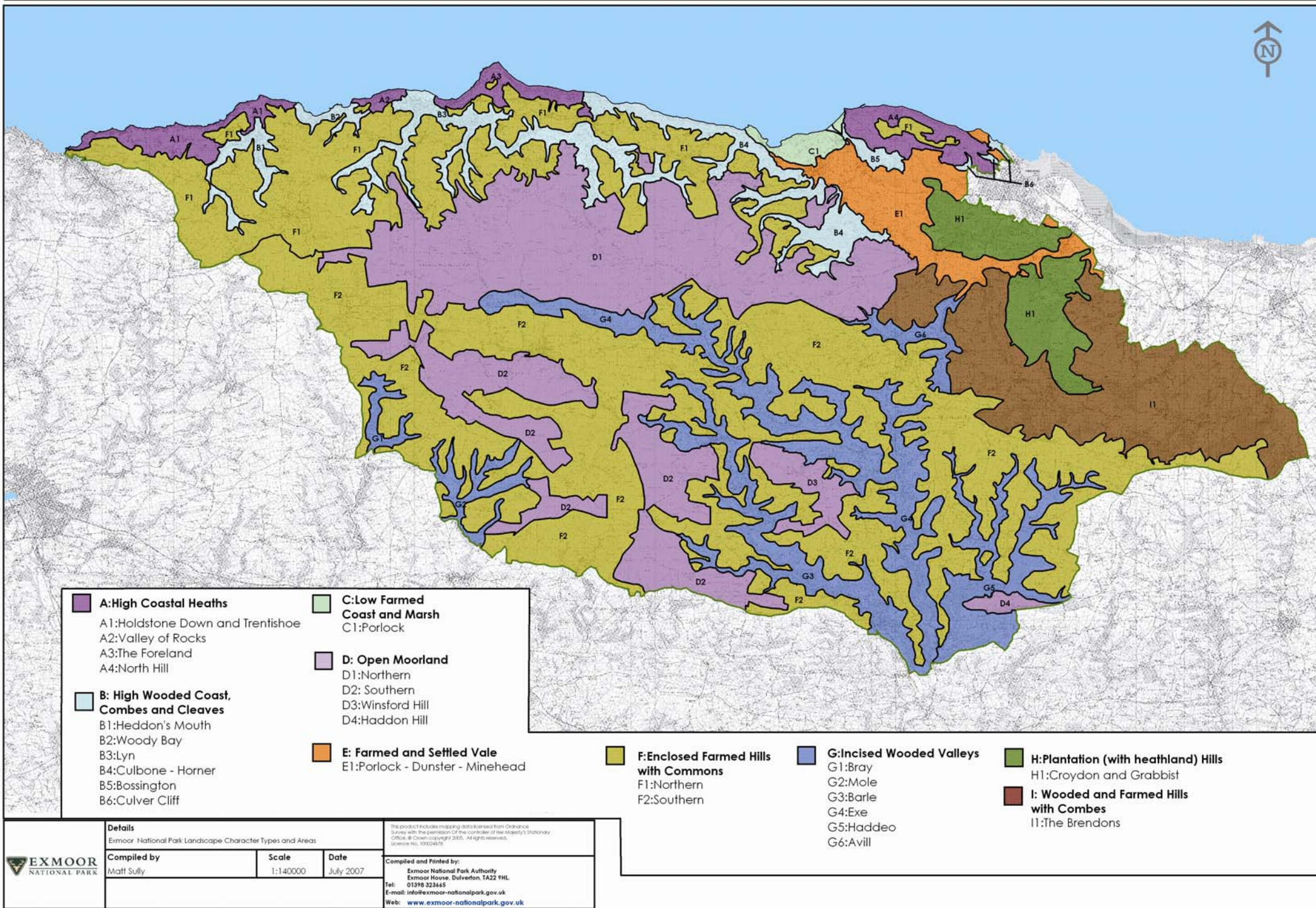
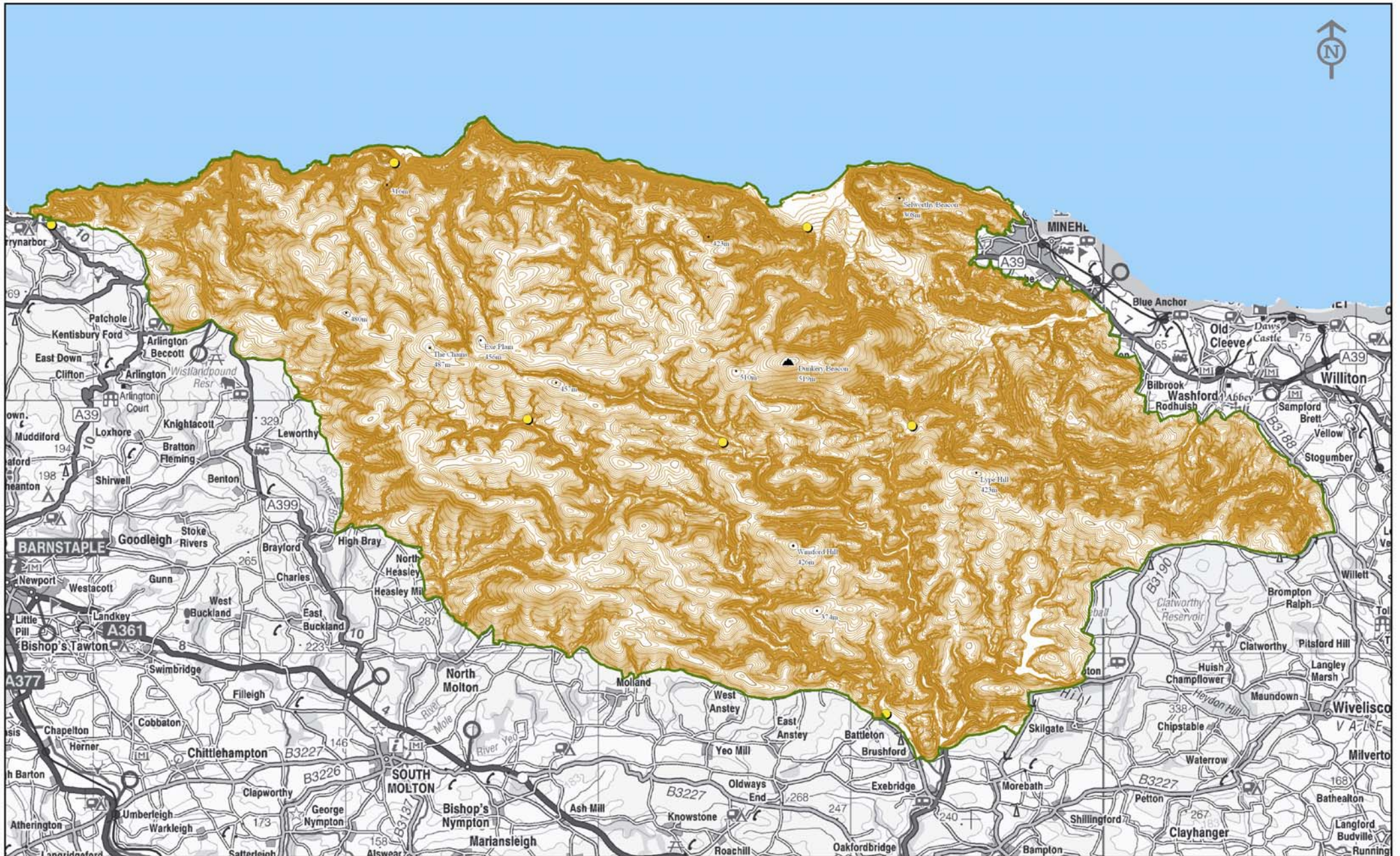
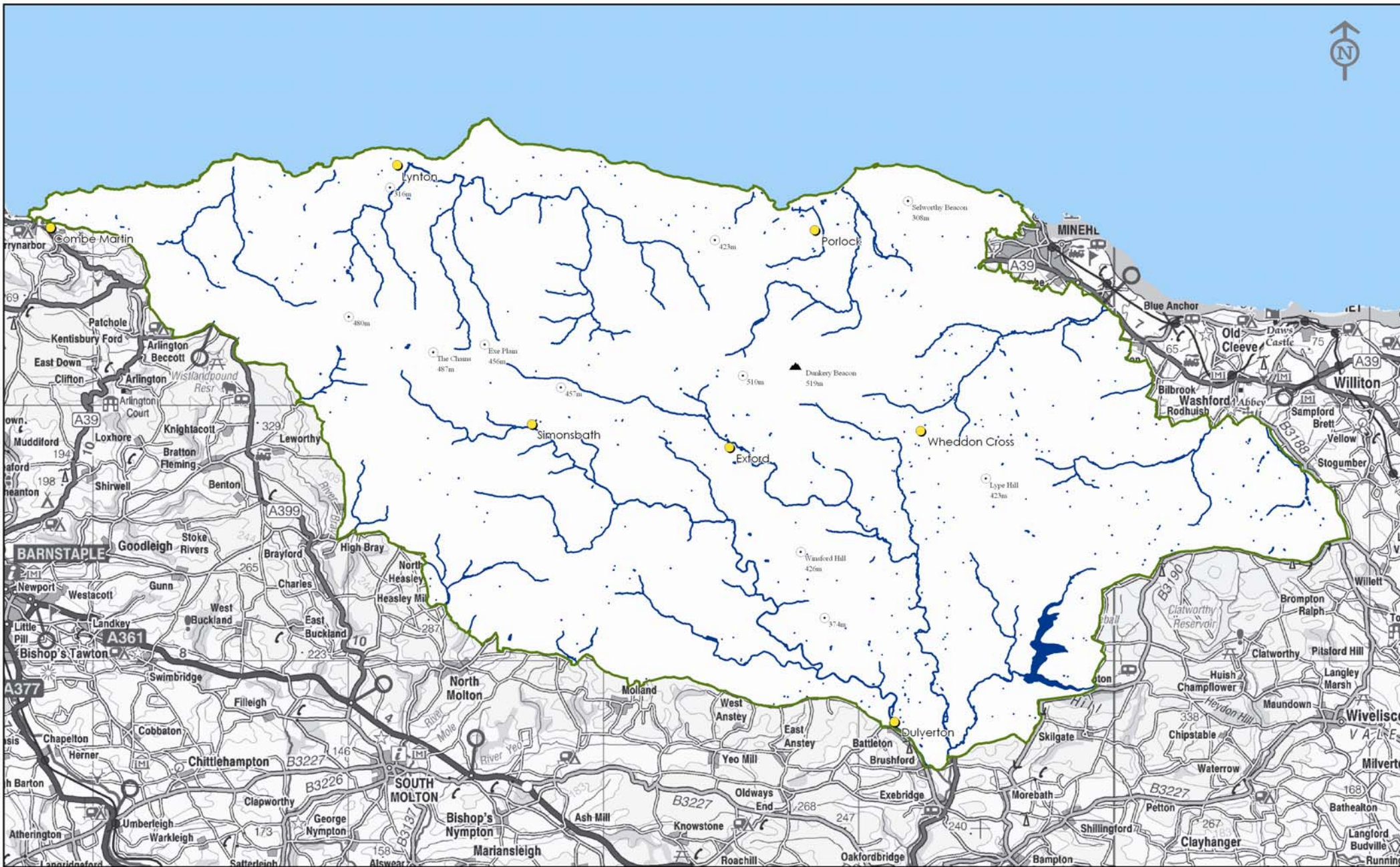


Figure 5: Baseline Data - Topography



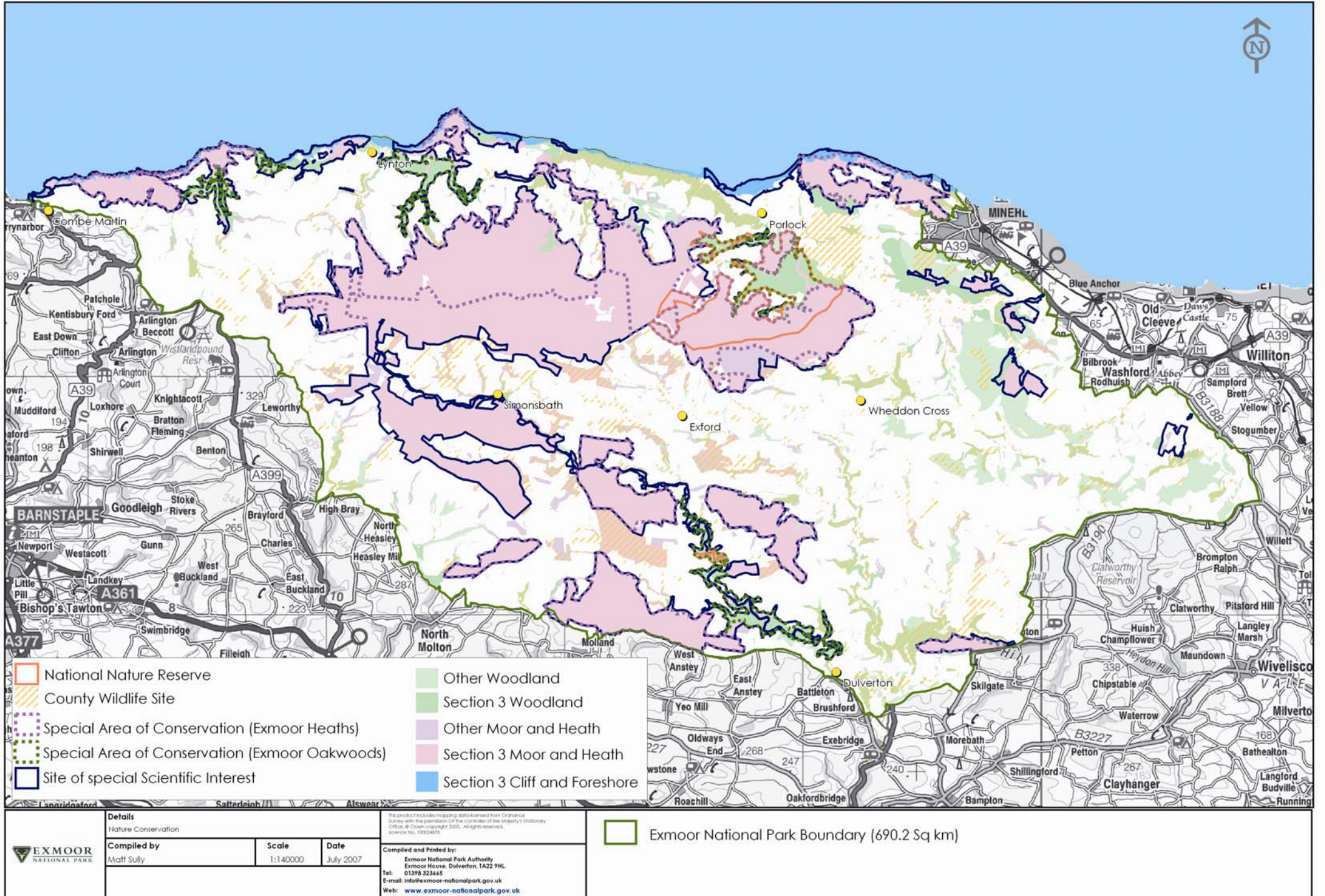
	Details Landscape Topography		<small>The product includes mapping data licensed from Ordnance Survey with the permission of the Controller of Her Majesty's Stationery Office. © Crown copyright 2005. All rights reserved. Licence No. 100024878.</small>	
	Compiled by Matt Sully	Scale 1:140000	Date July 2007	Compiled and Printed by: Exmoor National Park Authority Exmoor House, Dulverton, TA22 9HL Tel: 01398 323445 E-mail: info@exmoor-nationalpark.gov.uk Web: www.exmoor-nationalpark.gov.uk
Exmoor National Park Boundary (690.2 Sq km)		Indicates heights		
Indicates Contour lines				

Figure 6: Baseline Data - Hydrology



	Details Hydrology		<small>The product includes mapping data licensed from Ordnance Survey with the permission of the Controller of Her Majesty's Stationery Office. © Crown copyright 2005. All rights reserved. Licence No. 100024878.</small>	
	Compiled by Matt Sully	Scale 1:140000	Date July 2007	Compiled and Printed by: Exmoor National Park Authority Exmoor House, Dulverton, TA22 9HL Tel: 01398 323445 E-mail: info@exmoor-nationalpark.gov.uk Web: www.exmoor-nationalpark.gov.uk
			Exmoor National Park Boundary (690.2 Sq km)	Indicates heights
			Water Courses & Open Water	

Figure 7: Baseline Data - Nature Conservation



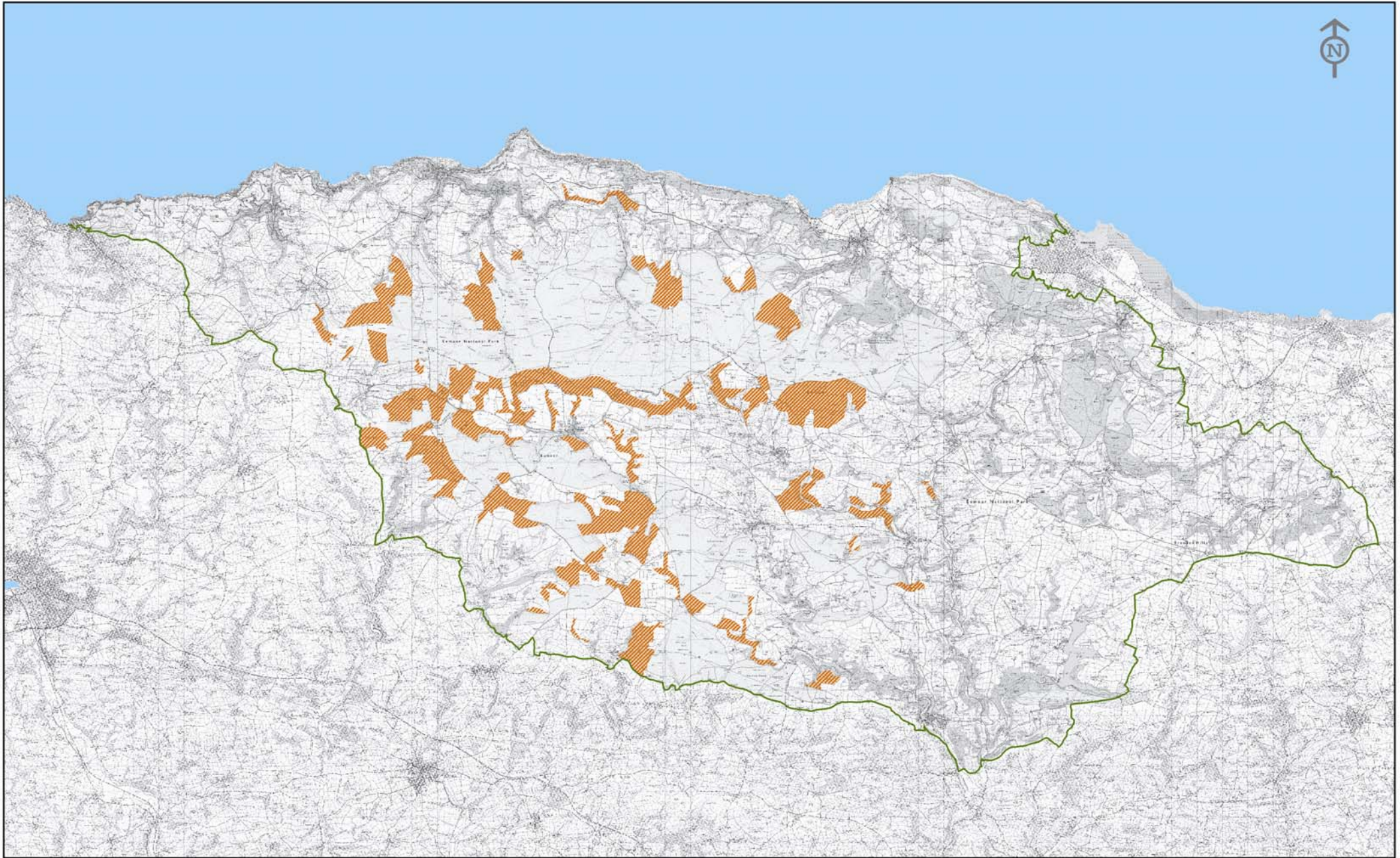
Details			
Nature Conservation			
Compiled by	Scale	Date	
Matt Sully	1:140000	July 2007	

The product includes mapping data licensed from Ordnance Survey with the permission of the Controller of Her Majesty's Stationery Office. © Crown copyright 2005. All rights reserved. Licence No. 100024878.

Compiled and Printed by:
 Exmoor National Park Authority
 Exmoor House, Dulverton, TA22 9HL
 Tel: 01398 323465
 E-mail: info@exmoor-nationalpark.gov.uk
 Web: www.exmoor-nationalpark.gov.uk

Exmoor National Park Boundary (690.2 Sq km)

Figure 8: Moorland Fringe



Details
Moorland Fringe

Compiled by
Matt Sully

Scale
1:140000

Date
July 2007

This product includes mapping data licensed from Ordnance Survey with the permission of the controller of Her Majesty's Stationary Office. © Crown copyright 2005. All rights reserved. Licence No. 100024878

Compiled and Printed by:
Exmoor National Park Authority
Exmoor House, Dulverton, TA22 9HL
Tel: 01398 323465
E-mail: info@exmoor-nationalpark.gov.uk
Web: www.exmoor-nationalpark.gov.uk



Areas of Moorland Fringe

