



Local Enterprise Growth Hub

EXMOOR NATIONAL PARK

Rural Enterprise Exmoor Day

Dunster Tithe Barn

www.exmoor-nationalpark.gov.uk/rural-enterprise

Rural Enterprise on Exmoor
Dan James
Enterprise and Communications Manager
Exmoor National Park Authority



1

Purpose of the Day

Inform

Inspire

Equip

Collaborate

2



3



4



Challenge & Opportunity

5



Vision for Exmoor's Economy 2030



An economy building community wealth, sitting lightly in its environment and creating opportunities from its special qualities

www.exmoor-nationalpark.gov.uk/rural-enterprise

6



7



8

A greener, wilder National Park, welcoming to all, supporting a vibrant local economy.



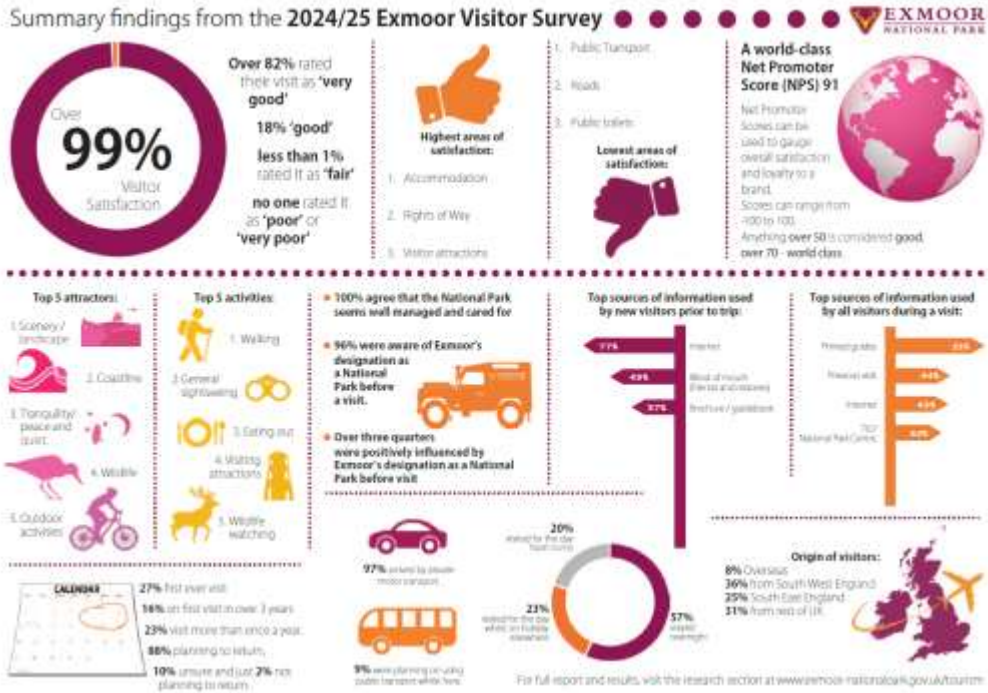
www.exmoor-nationalpark.gov.uk/ManagementPlan

9



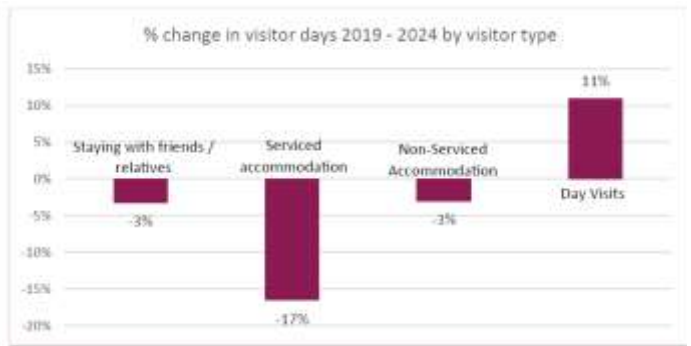
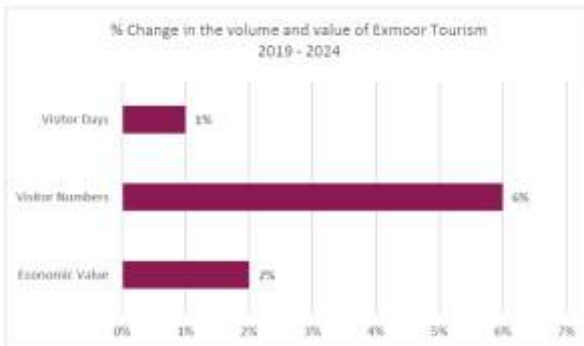
www.exmoor-nationalpark.gov.uk/ManagementPlan

10



11

Volume and value of tourism on Exmoor 2019-2024



12



Helping everyone that enjoys Exmoor National Park, and benefits from its special qualities, to contribute to enhancing this special place.



www.exmoor-nationalpark.gov.uk/tourism

13



Regenerative

Ensuring that tourism leaves Exmoor a better place, having a net positive contribution on our communities and landscapes of Exmoor.



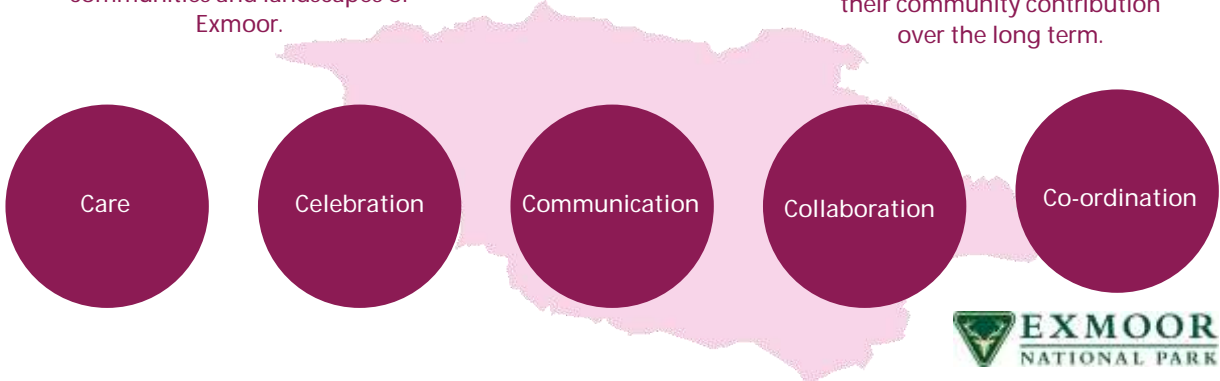
Productive

Increasing productivity and economic impact to reinvest in the community.




Resilient


Improving the resilience of the sector and the prospects of its businesses and employees and their community contribution over the long term.




14



 **Growth Hub**

 **EXMOOR NATIONAL PARK**

Rural Enterprise Exmoor Day



Dunster Tithe Barn

www.exmoor-nationalpark.gov.uk/rural-enterprise

Thank you

