



# Rural Enterprise Exmoor Business Networking Day

## 18<sup>th</sup> November 2025

Katherine Williams, Network Manager



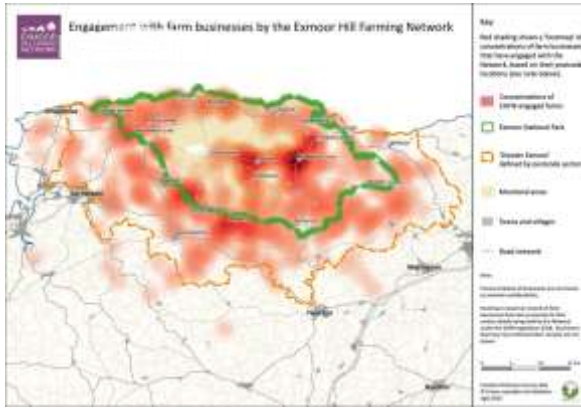
1



## Who are we?

- Independent and farmer led
- Board of Directors
- CIC
- One of 56 Farm Support Networks
- Key Funders - RCF, ENPA
- Network Manager and p/t Network Administrator
- Supporting around 475 farming businesses in the Greater Exmoor area
- 730 individual contacts receiving regular updates

2



## How it works?

- Inclusive, free membership
- Greater Exmoor Area
- Small family farms to estates
- Upland mixed livestock enterprises
- Diversification
- Knowledge exchange and transfer
- Peer support groups
- Likeminded/common interests
- Combating rural isolation
- Facilitation role
- Commercial adverts

3

## Objectives for 2024-2027



- A. The Go- to- Hub for farmers on Exmoor
- B. Income opportunities for Exmoor farmers
- C. Health and Wellbeing
- D. The Next Generation
- E. Business Support
- F. Securing the Network Future

4

## Training Opportunities

- Emergency at Work First Aid
- Telehandler
- Tractor Driving
- Safe use of Pesticides
- Safe use of Rodenticides
- Bookkeeping
- Welfare in Transit
- Social Media \*\* NEW\*\*



5



Some of the challenges and opportunities facing Exmoor farmers and landowners

6



Future of Farming of Exmoor



7



Planning Ahead



8

## Government Support

### Farm for the Future Programme

- 3-year programme
- 11 provided under RCF
- 124 farming business engaged
- Workshops
- Topic led
- 1-2-1 meeting



9

# PREPARING FOR THE FUTURE OF THE FAMILY FARM



Ward and Co  
SPECIALIST AGRICULTURAL ACCOUNTANTS

**Thursday 20th November**  
7pm Exford Village Hall

*Further to the recent budget update. Join local industry experts John and Rebecca Ward to discuss the importance of planning for the future of the farming business. This workshop will help you understand Inheritance Tax for effective estate planning and when handling sensitive discussions.*

Areas to be Covered

- What does IHT mean for you and general IHT exemptions?
- Agricultural Property Relief
- Business Property Relief
- Pro and Cons with family partnerships: what it entails?
- General question and answer session



Booking essential for catering purposes and dietary requirements please contact us by Monday 25th November [admin@ekmoon.org.uk](mailto:admin@ekmoon.org.uk) or 01643 841455

10



11



12

## Wellbeing of our Farming Community



13



14



**EXMOOR  
HILL FARMING  
NETWORK**

# Questions after the

**Contact Information:**  
Katherine Williams, Network Manager  
T. 01643 841455. M: 07970 795808  
Exmoor Hill Farming Network CIC, Cutcombe Market, Wheddon Cross,  
Minehead TA24 7DT W. [www.ehfn.org.uk](http://www.ehfn.org.uk)  
Registered in England and Wales No. 20151981

15